

This Quick User Guide helps you get started with **IRIScan™ Mouse Executive 2**.

The descriptions in this documentation are based on the Windows® 7 and Mac® OS X Mountain Lion Operating Systems. Please read this guide before operating this scanner and its software. All information is subject to change without prior notice.

Should you experience issues when using the IRIScan™ Mouse, consult the Frequently Asked questions or contact Technical Support at www.irislink.com/support.

Table of Contents


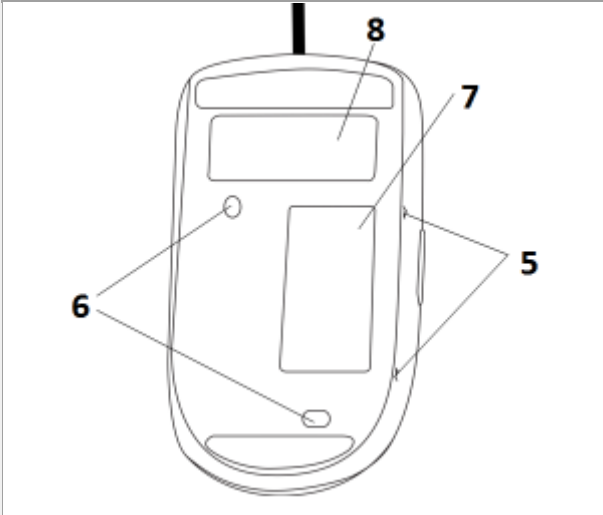
1. Introduction
2. Hardware Overview
3. Installing the IRIScan™ Mouse application
 - 3.1 Installation on Windows
 - 3.2 Installation on Mac OS
4. Using the IRIScan™ Mouse
 - Step 1: Scan documents
 - Step 2: Edit the scanned documents
 - Step 3: Save and share the scanned documents

1. Introduction

The IRIScan™ Mouse is a mouse and scanner combined. With the scan function, you can scan documents by sliding the mouse over them.

The scan results can be saved in several ways. You can drag-and-drop them to file folders and applications. Save them directly as Doc, PDF and XML files. Share them via Mail, Facebook®, Twitter® and Flickr®. And send them to apps such as Cardiris™, Dropbox®, Evernote® and Google® Translate.

2. Hardware Overview

| | |
|---|---|
|  | <ol style="list-style-type: none"> 1. Left button 2. Wheel 3. Right button 4. Scan button |
|  | <ol style="list-style-type: none"> 5. Scan surface indicators 6. Laser sensors 7. Scan surface Remove the film before scanning 8. Mouse label |

3. Installing the IRIScan™ Mouse application

Important Notes:

Make sure you have the required administration rights on your computer to do the installation.

Make sure to install Cardiris™ before you install the actual IRIScan™ Mouse application, as explained below. Otherwise IRIScan™ Mouse will not be able to send scanned documents to Cardiris™.

3.1 Installation on Windows

Installation from CD-ROM:

1. Insert the **IRIScan™ Mouse** disc in the CD-ROM drive of the computer. The installation menu is displayed automatically.

In case the menu does not start automatically, run **setup.exe** from the disc.



2. Click **Cardiris™ Pro 5**. Then follow the on-screen instructions.
3. Return to the installation menu and click **IRIScan™ Mouse Executive 2**. Again follow the on-screen instructions.
4. Click **Finish** to complete the installation.
5. Unplug your regular mouse. Plug in the IRIScan™ Mouse in a free USB port (USB 2.0 or higher). The driver is installed automatically within a few seconds.

3.2 Installation on Mac OS

Installation from CD-ROM:

1. Insert the **IRIScan™ Mouse** disc in the CD-ROM drive of the computer.
2. Click the IRIScan™ Mouse CD-ROM icon that appears on the Desktop.
The installation menu is now displayed.

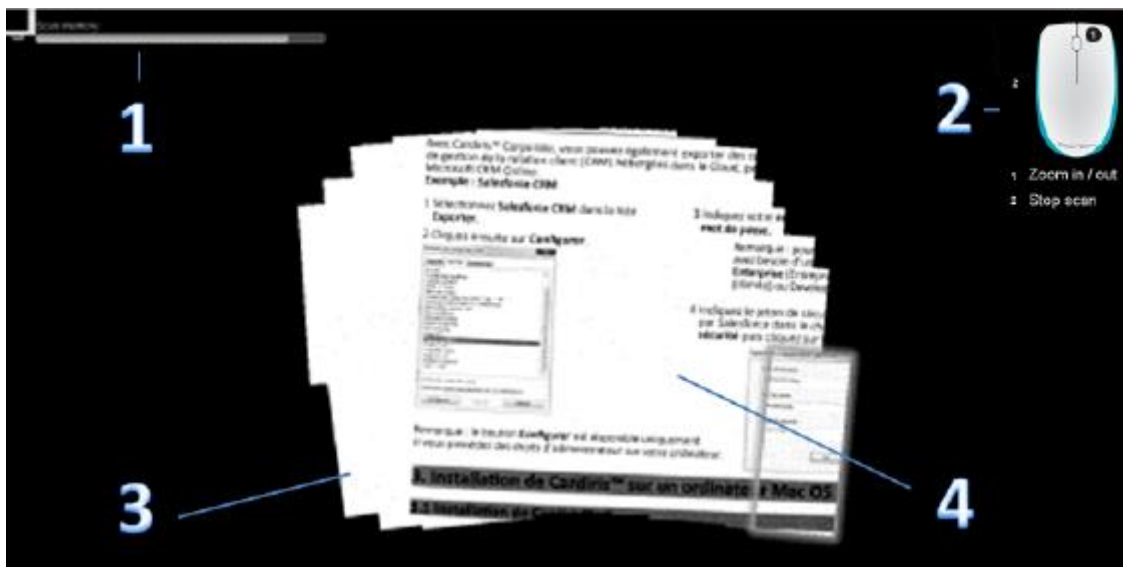


3. Click **Cardiris™ 4**. Then follow the on-screen instructions.
4. Return to the installation menu and click **IRIScan™ Mouse.pkg**. Again follow the on-screen instructions.
5. Click **Finish** to complete the installation.
6. Unplug your regular mouse. Plug in the IRIScan™ Mouse in a free USB port (USB 2.0 or higher). The driver is installed automatically within a few seconds.

4. Using the IRIScan™ Mouse

Step 1: Scan documents

- Place the mouse on the documents you want to scan.
- Press the **Scan** button once to start IRIScan™ Mouse.
- Move the mouse over the documents to scan the desired area.
- To stop scanning, press the **Scan** button again. This opens the **Edit** screen. To cancel the scanning, press **Esc** on the keyboard.



Scan screen functions

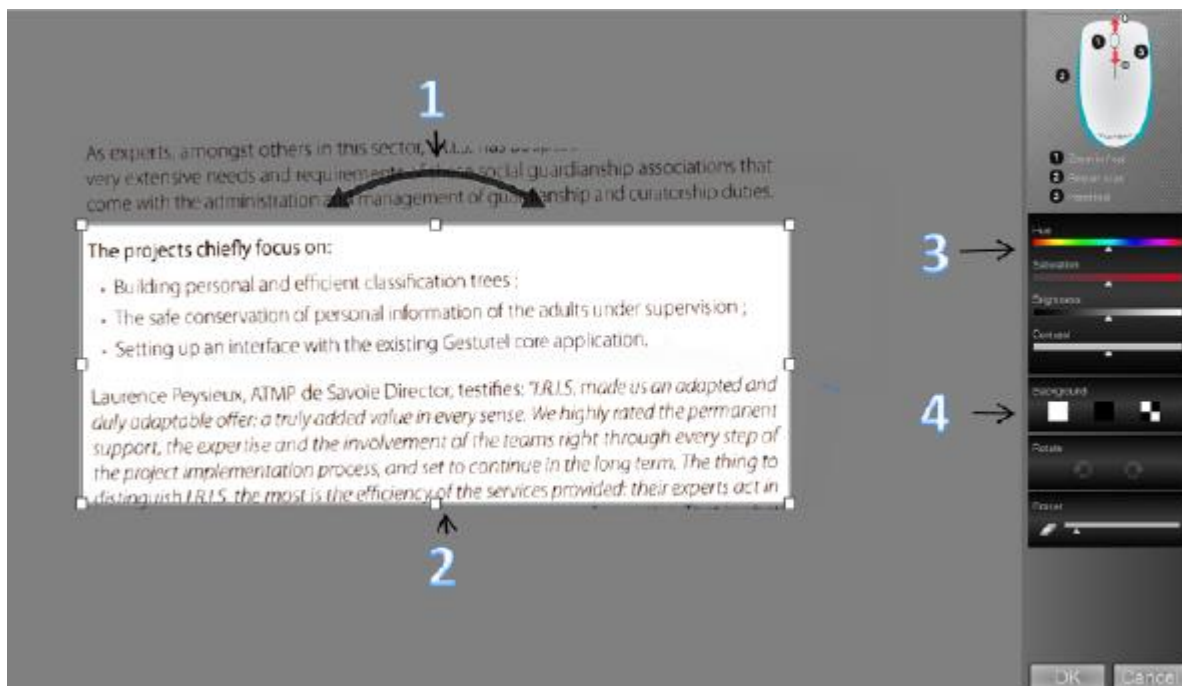
| | |
|---|-------------------------|
| 1. Remaining scan memory | 2. Function description |
| 3. Scan window; indicates current scan area | 4. Scan image |

Notes

- During scanning, IRIScan™ Mouse automatically zooms out and adjusts the view accordingly. To check whether the image is scanned properly, use the mouse wheel to zoom in/out on the image. You can scan documents of up to A3 size.
- If you move the IRIScan™ Mouse too fast, the scan window turns yellow or red. Slow down the scanning if needed.
- If the scanned image appears distorted, stop moving the IRIScan™ Mouse briefly. The image will be calibrated automatically.
- When the scanning is done, the scanned image is automatically cut into a rectangular shape and aligned horizontally to the background.

Step 2: Edit the scanned documents

In the Edit screen you can edit the scanned documents.



Edit screen functions

| | |
|---|---|
| 1. Rotate the scan result | 3. Adjust the colors, brightness and contrast |
| 2. Resize the scan area using the handles | 4. Adjust the background |

When you are done, click **OK** to accept the settings. To return to the Edit screen afterwards, click **Edit** in the main screen.

Note: when you click **Cancel** the scan result will not be saved to memory.

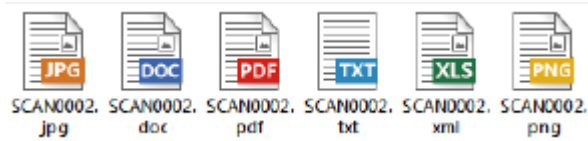
Step 3: Save and share the scanned documents

Before you save the scanned documents, make sure to select the correct recognition language. The default recognition language is set to **English**. Thanks to I.R.I.S.' powerful text recognition technology you can recognize documents in 130 languages.

| Windows PC | Mac OS |
|---|--|
| <p>To change the text recognition language:</p> <ul style="list-style-type: none"> • Click Options > Settings. • Click Text Recognition. • Select the required language(s) from the list. You can select up to 3 languages simultaneously. | <p>To change the text recognition language:</p> <ul style="list-style-type: none"> • Click Scanner Mouse > Preferences. • Click Text Recognition. • Select the required language from the list. |

1. Save documents in default applications.

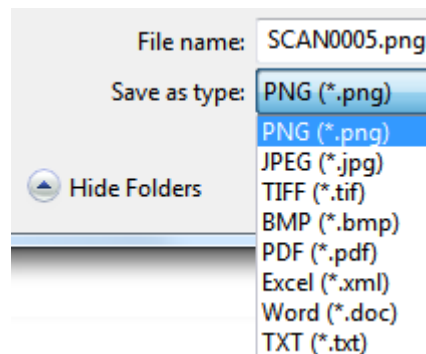
1. Double-click the required output format.



2. The document opens in your default application for that format.
3. Save the document from within your default application.

2. Save documents as output files.

1. Click **Save**.
2. Enter the file name and select a file type.
The supported file types are: png, jpeg, tiff, bmp, pdf, xml, txt and doc.



3. Then click **Save**.

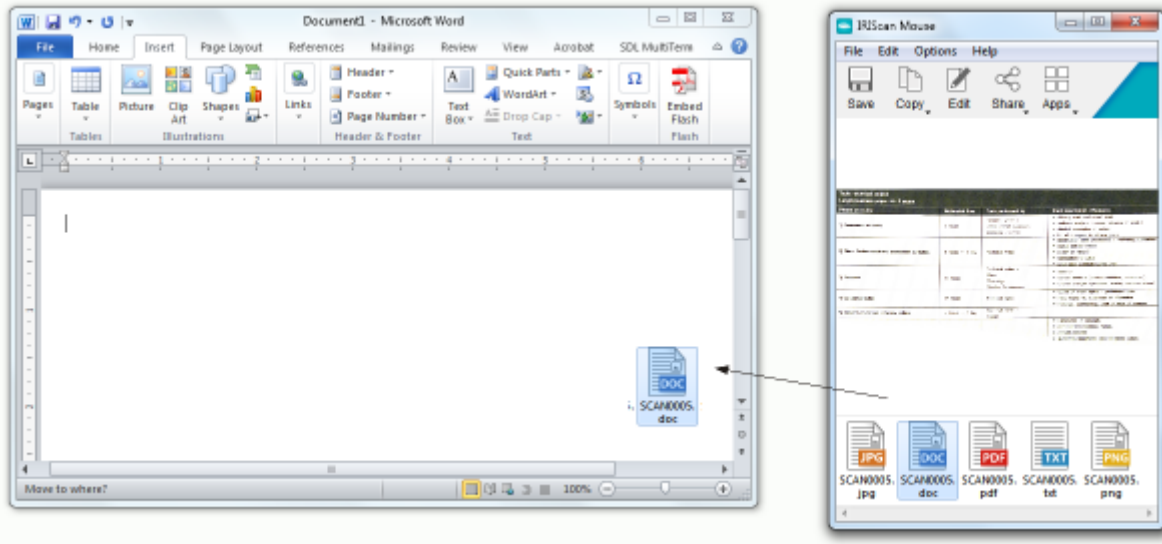
Notes:

The image and pdf files you save can be hyper-compressed with the included **IRISCompressor™**.

When scanning tables, it is recommended to save them as .xml files.

3. Drag-and-drop to applications.

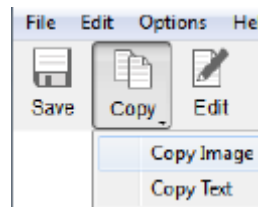
1. Choose in which format you can to save the document.
2. Open an application that supports the selected format.
E.g. Microsoft Word or Pages for Doc or Adobe Reader for PDF.
3. Drag-and-drop the required format icon to the application.



Note: you can also drag-and-drop the scan results directly to the Desktop or to file folders.

4. Copy as image or text.

1. Click **Copy**.



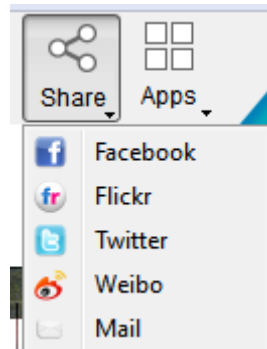
2. Select **Copy Image** or **Copy Text**.
3. Open an application that supports images or rich text, or both. E.g. Microsoft Word or Pages.
4. Then click **Paste** inside that application.

Note: you can also use the copy-paste shortcuts.

5. Share images via Mail, Facebook, Twitter and Flickr

Note: when using the Share functions, the scans are always sent as **images**.

1. Click **Share**.
2. Select the required application.
Note that you need a valid Facebook, Twitter or Flickr account and an internet connection to share scans via these applications.



3. A Login window appears. Now log in to your account.

6. Send documents to apps

Cardiris™

When scanning business cards, you can recognize and store them in Cardiris™, I.R.I.S.' powerful business card scanning solution and organizer.

Important: Cardiris™ must have been installed before you installed the IRIScan™ Mouse application. If that is not the case, uninstall IRIScan™ Mouse, insert the IRIScan™ Mouse CD-ROM and install Cardiris™. Then install IRIScan™ Mouse.

1. Click **Apps > Cardiris™**.
2. Cardiris™ opens and displays the scan.
3. Now you can process the business card:
 - Double-click your scanned card to display it.
 - Select the appropriate country from the list.



- Then click **Recognize**.
The data is extracted from the card and filled in in the corresponding fields.

For more information, see the Cardiris™ Help file.

Evernote

Your scans can be sent to Evernote. If your scans contain text, both the recognized text and the image are stored in Evernote.

1. Make sure the Evernote application is installed on your computer.
2. Log in to your Evernote account.
3. In IRIScan™ Mouse click **Apps > Evernote**.
The following message appears: **Evernote - Files synchronized with Evernote**.
4. The scans have now been sent to Evernote.

Dropbox

Your scans can be sent to Dropbox. They are saved both as text files (.doc) and as image files (.jpg) to your Dropbox folder.

1. Make sure the Dropbox application is installed on your computer.
2. Log in to your Dropbox account.
3. In IRIScan™ Mouse click **Apps > Dropbox**.
The following message appears: **Dropbox - Files synchronized Dropbox**.
4. The scans are sent to the **Scanner Mouse** folder within your Dropbox.

Google Translate

Your scans can be translated with Google Translate.

1. Make sure your computer is connected to the internet.
2. In IRIScan™ Mouse click **Apps > Google Translate**.
3. The recognized text in the scans is sent to Google Translate.
Note: make sure you have selected the correct recognition language in IRIScan™ Mouse (See [Step 3](#)).

| |
|---|
| Should you experience issues when using the IRIScan™ Mouse, consult the Frequently Asked Questions or Technical Support on www.irislink.com/support . |
|---|