



# IRIScan™ Express 4

## Quick User Guide

I.R.I.S. SA/NV  
Rue du Bosquet 10  
B-1348 Louvain-la-Neuve

P: +32 (0) 10 45 13 64  
F: +32 (0) 10 45 34 43

[www.irislink.com](http://www.irislink.com)

**Canon**  
CANON GROUP

## Contents

1. Introduction .....	3
2. Software Installation .....	4
2.1 Important Notes .....	4
2.2 Precautions .....	4
2.3 Installation .....	4
2.4 Activation .....	5
3. Supported Documents .....	6
4. Using the Scanner .....	7
4.1 Top view .....	7
4.2 Rear view .....	7
4.3 Scanning with the IRIScan™ Express 4 .....	8
5. Maintenance .....	9
5.1 Calibrate the scanner .....	9
5.2 Cleaning the scanner .....	10
6. Troubleshooting .....	11
6.1 Clearing a Paper Jam .....	11
6.2 Questions and Answers .....	12
6.3 Product Support .....	13
7. Specifications .....	14
7.1. Scanner Specifications .....	14
7.2. System Requirements .....	14
8. Legal Information .....	15

## 1. Introduction

This User Guide helps you get started with the **IRIScan™ Express 4**.

Please read this guide before operating this scanner and its software. All information is subject to change without prior notice.

The software delivered with this scanner is:

The **IRIScan™ Express 4** scanner is bundled with different **software packages**.

### **Windows®:**

- Readiris™ Pro
- Cardiris™
- Button Manager

### **macOS®:**

- Readiris™ Pro
- Capture Tool

For detailed information about the full range of features of Readiris™, Cardiris™, and the Button Manager, see their corresponding documentation on <http://www.irislink.com>.

## 2. Software Installation

### 2.1 Important Notes

- Install the software applications **before** you connect the scanner to your computer and **in the order** indicated below
- Check the [System Requirements](#) to make sure your system is compatible.

### 2.2 Precautions

- Keep the scanner out of direct sunlight. Direct exposure to the sun or excessive heat may cause damage to the unit.
- Do not install the scanner in a humid or dusty place.
- Be sure to use the proper AC power source.
- Place the scanner securely on an even, flat surface. Tilted or uneven surfaces may cause mechanical or paper-feeding problems.
- Retain the scanner box and packing materials for shipping purposes.

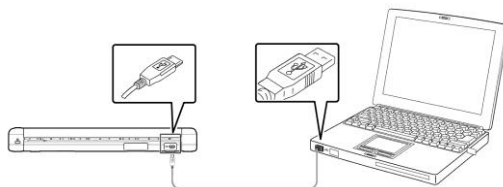
### 2.3 Installation

1. Go to [www.irislink.com/start](http://www.irislink.com/start).
2. Scroll down to **IRIScan™ Express 4**.
3. Select the version you acquired and click **Getting Started**.
4. Then click **Start now**.
5. Complete the form and click **Register now**. (Registering activates the product guarantee)
6. Select the required Operating System.
7. Click **Download** to download the software.
8. Go to the location where you downloaded the software, and run the installation file.
9. The following setup screen is displayed:

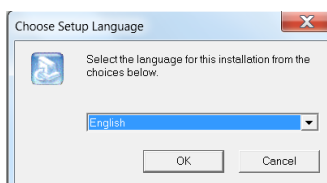
**WARNING:** install the different software applications in the order indicated below.



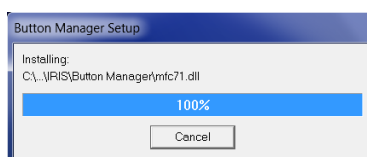
10. Click **Readiris™ Pro** to install it. Follow the on-screen instructions.
11. Return to the setup screen and click **IRIScan™ Express 4 Driver** to install the scanner driver.
12. Click **Next** until you reach the step **Plug in the USB Cable**.
  - Connect the micro USB connector to the USB port of the scanner.
  - Connect the other end of the USB connector to a USB port on your computer.



13. When the driver is successfully installed the following message appears: **This device is now ready to use.**
14. Click **Finish** and return to the setup screen.
15. Click **Button Manager** to install the Button Manager. A language selection window appears.



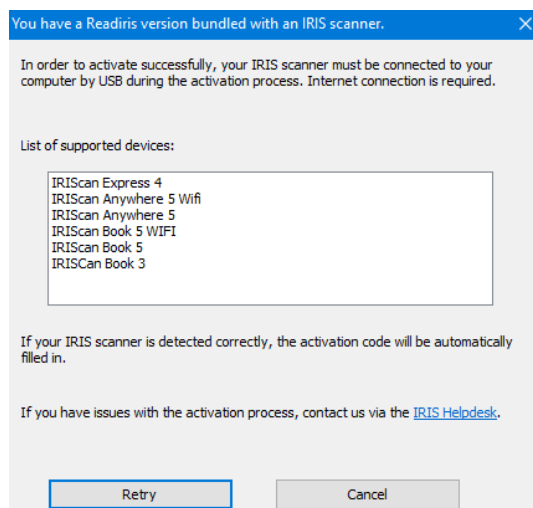
16. Choose the language you wish to install. The InstallShield wizard guides you through the rest of the installation.



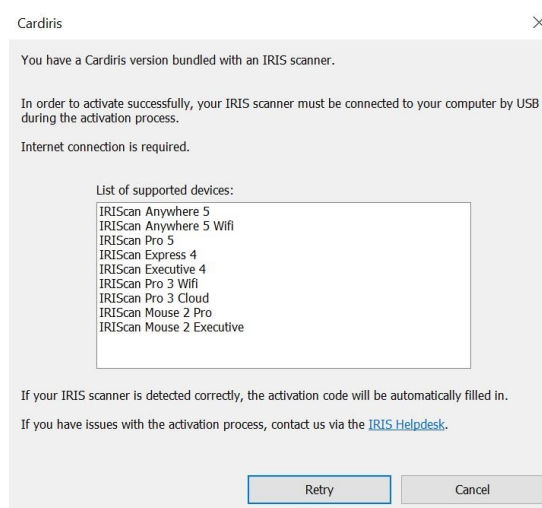
17. Click **Finish** to complete the installation.
18. Click **Cardiris™ Corporate** to install Cardiris™. Follow the on-screen instructions.

## 2.4 Activation

The license numbers required to activate Readiris™ and Cardiris™ will be retrieved automatically on the condition that your scanner is connected to your computer by USB during activation process.



*Activation of Readiris™*



*Activation of Cardiris™*

For detailed information about the full range of features of Readiris™ or Cardiris™, see their corresponding documentation on <http://www.irislink.com>.

### 3. Supported Documents

The scanner is designed to obtain the best scanning results with the following types of originals:

- Photos and documents (3"x5", 4"x6", 5"x7", 8.5"x14") (76 x 127mm, 102 x 152 mm, 127 x 177 mm, 216 x 356 mm)
- Business cards [standard 3.5"x 2" (88 x 50 mm) or larger]
- Long page (8.5"x36") (216 x 914 mm) for 300 dpi only
- Paper Weight: 60~107 g/m2 (16~28 lb)

#### Unsuitable Documents

Do **not** use the following types of originals for scanning, or the scanner may malfunction or cause the original to jam in the slot.

- Originals thicker than 0.8 mm
- Originals with either side shorter than 50 mm
- Originals with lots of black or dark colors
- Originals with dark colors surrounding the edges
- Printed media (newspapers, magazines, etc.)
- Soft and thin materials (thin paper, cloth, etc.)

## 4. Using the Scanner

### 4.1 Top view



Item	Name	Description
1	Feed slot	Insert document into the feed slot, printed side <b>UP</b> and aligned with the left edge to begin scanning.
2	Paper guide	Adjust to scan documents of different size.
3	Scanner button	Press to scan (on Windows PC only )

### 4.2 Rear view



Item	Name	Description
1	Micro USB port	Connect to a computer via the micro USB cable.

### 4.3 Scanning with the IRIScan™ Express 4

The IRIScan™ Express 4 can be used in several ways:

- With the **Button Manager (Windows only)** to scan documents directly to Readiris for text recognition, scan them to other applications of your choice, to multiple Cloud destinations, etc.
- From within **Readiris™** or **Cardiris™**.
- From within the **Capture Tool**.

#### Important!

- Insert only one page at a time, and insert the next one only when the previous one is done. Otherwise, the scanner may malfunction.
- The paper detector is quite sensitive. Please do not push your document into the feeding slot or the top of your image will be cut. Simply let go the document when it begins to feed into the slot.

1. Insert your document **FACE UP** into the feeder and align it to the left edge of the feeder. Then, adjust the paper guide to the right-hand side of the document.



2. Gently push the document into the feed slot.
3. **On Windows:** press the **scanner** button once to start scanning.
4. **On macOS:** click **Scan** from within Readiris™ or the Capture Tool.

In this User Guide we only describe the basics how to scan.

Separate User Guides are available for the Button Manager, the Capture Tool, Readiris™ and Cardiris™.

The documentation package can be found on the [Technical Support section](#) of [www.irislink.com](http://www.irislink.com).



## 5. Maintenance

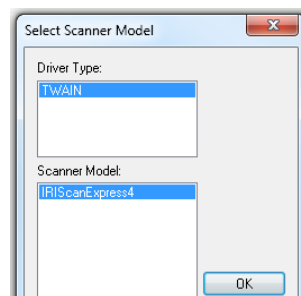
### 5.1 Calibrate the scanner

Calibrate only if the scanned image looks fuzzy, the color looks abnormal (e.g., darker than normal), after more than 8,000 scans, or the scanner has been stored without use for a long time. The calibration process resets the Contact Image Sensor to resume its color and sharpness precision.

1. Connect the scanner to your computer.
2. Start the **Capture Tool**.

#### In Windows:

- Click **Start > All Programs > IRIScan Express 4 scanner > Capture Tool**
- Select your driver type and scanner model and click **OK**.



#### On Mac OS:

- Click **Finder > Applications > Capture Tool**

3. The Capture Tool dialog box will be displayed.
4. Click the **"Setup"** button to open the Scanner Properties dialog box.
5. **In Windows:** click the **"Settings"** tab and then click the **"Calibration"** button.
6. **On Mac OS:** click the **"Enhancement"** tab and then click the **"Calibration"** button.
7. The **"Insert calibration sheet"** dialog box appears.
8. Hold the edges of the calibration sheet (*included*) and insert it with the text *facing up* and the white area feeding first into the feeder (As shown below).



9. Click **"OK"** in the **"Insert calibration sheet"** dialog box to start calibrating the scanner.

**Warning:** If the calibration failed, the Red LED will be flashing and an error message will be displayed on the screen. Disconnect and reconnect the scanner and then repeat the calibration.

## 5.2 Cleaning the scanner

In order to maintain an optimal scan quality and prevent dust accumulation, it is recommended you clean the scanner (*outer casing and feed rollers*) approximately every 200 scans, or if vertical lines or stripes appear on the scanned image.

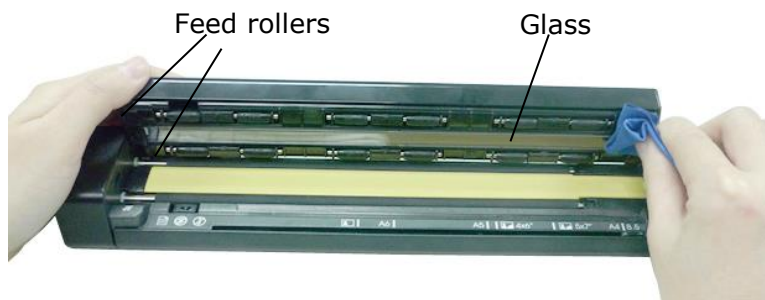
- Use only the recommended and supplied tools to clean the scanner.

**Warning:** Do not use any solvents or corrosive liquid (*i.e., alcohol, kerosene, etc.*) to clean any part of the scanner, otherwise the plastic material may be permanently damaged.

1. Open the cover by holding the scanner with one thumb on the feeder and another thumb on the cover. Carefully and firmly press your thumb into the feeder and then raise the cover. This will cause the top of the scanner to release from the bottom of the scanner.



2. Gently wipe the glass and feed rollers on the scanner, and the CIS cover with the cleaning cloth (*included*).



## 6. Troubleshooting

### 6.1 Clearing a Paper Jam

1. Open the cover by holding the scanner with one thumb on the feeder and another thumb on the cover. Carefully and firmly press your thumb into the feeder and then raise the cover. This will cause the top of the scanner to release from the bottom of the scanner.



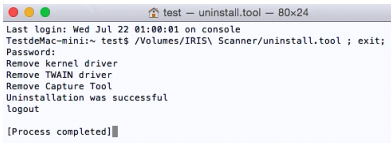
2. Remove the item.



Close the cover and reinsert the item to rescan.

## 6.2 Questions and Answers

<b>Question:</b>	<b>Why does my scanned image always come out too dark?</b>
<b>Answer:</b>	<ol style="list-style-type: none"> <li>1. Please adjust the screen settings to SRGB.</li> <li>2. Please adjust the brightness settings on the screen from application software.</li> </ol>
<b>Question:</b>	<b>Why are there strange lines on the scanned document?</b>
<b>Answer:</b>	<p>Please check the following:</p> <ol style="list-style-type: none"> <li>1. Are there scratches on the original or is the original clean ?</li> <li>2. Remove any stains or dust from the original before scanning.</li> <li>3. Clean the rollers and glass with the included cleaning cloth. (Refer to the section "Clean the scanner")</li> </ol>
<b>Question:</b>	<b>When I choose 600 dpi as optical resolution, why are the "auto crop" and "deskew" functions disabled?</b>
<b>Answer:</b>	Since performing auto crop and deskew consumes great deal of system memory, it is recommended to select an optical resolution below 600 dpi to prevent errors.
<b>Question:</b>	<b>Should the scanner feel warm to the touch?</b>
<b>Answer:</b>	It is normal for the scanner to emit a small amount of heat after prolonged use. However, if there are strange odors coming from the scanner or the scanner feels a little bit hot to the touch, turn the scanner off immediately.

<b>Question:</b>	<b>How do I uninstall IRIScan™ on macOS?</b>
<b>Answer:</b>	<p>Go to the package you downloaded from the I.R.I.S. website. Open the <b>Uninstall Scanner</b> folder. Double-click <b>Press Uninstall</b>. Enter your super user password.</p>  <p>The IRIScan™ driver and Capture Tool will be removed.</p>

### 6.3 Product Support

Should you still experience issues using the IRIScan Express 4, consult the [Technical Support section](#) of <http://www.irislink.com>.

## 7. Specifications

### 7.1. Scanner Specifications

Model Number :	FF-1310H (simplex scanner)
Image Technology:	Contact Image Sensor (CIS)
Optical Resolution:	1200 dpi
Scanning Modes:	Black & White Gray Color
Paper Weight:	16~28 lbs (60~107 g/m <sup>2</sup> )
ID Card Thickness:	Up to 0.8 mm
Interface:	Micro USB port compatible with USB 2.0
USB Power:	5Vdc, 500mA
Power Consumption:	<2W (operation) <0.6W (standby)
Operating Temperature:	10°C ~ 35°C (50°F~95°F)
Humidity:	10%~85% RH
Dimensions: (HxWxD)	11.4" x 2" x 1.4" (290 x 52 x 35 mm)
Weight:	0.88 lbs (400g)

### 7.2. System Requirements

#### For Windows®:

Memory:	Minimum 1 GB RAM. 2 GB is recommended.
Hard disk space:	1 GB of available hard disk space.
Operating System:	Windows® 7   Windows® 8   Windows® 10

#### For macOS®:

Memory:	1GB RAM. 2 GB is recommended.
Hard disk space:	1GB of available hard disk space
Operating System:	Mac OS® 10.12 or above

The system requirements and compatibility can change over time, depending on the operating system and updates from Microsoft/Apple.

To get the most up to date requirements, you can check the [Support Page](#) on our website.

## 8. Legal Information

### Copyright

© 2019 I.R.I.S SA. All rights reserved.

The software described in this document is furnished under a license agreement or nondisclosure agreement. The software may be used or copied only in accordance with the terms of those agreements. No part of this publication can be reproduced in any form or by any means without prior written permission of I.R.I.S. SA.

Material scanned by this product may be protected by governmental laws and other regulations, such as copyright laws, the customer is solely responsible for complying with all such laws and regulations.

### Documentation version 19-1.0

Specifications of this software and contents of this user manual are subject to change without notice. Any modification, error correction, or feature updates made in the actual software may have not been timely updated in this user manual. You may refer to the software itself for more accurate details. Any misprints, translation error, or inconsistent with existing software, will be updated timely.

This documentation uses fictitious names as examples; references to actual persons, companies or organizations are strictly coincidental.

### Trademarks

The IRIScan™ Express is a trademark of Image Recognition Integrated Systems S.A.

Microsoft® is a U.S. registered trademark of Microsoft Corporation.

Windows®, Windows 7, Windows 8 and Windows 10 are either registered trademarks or trademarks of Microsoft Corporation in the United States and/or other countries.

Microsoft and Windows are registered trademarks of Microsoft Corporation.

Energy Star® is a registered trademark of the U.S. government.

Other names and products mentioned in this document may be trademarks or registered trademarks of their respective companies.

### Warranty

I.R.I.S. makes no warranty of any kind with regard to this material, including, but not limited to, the implied warranties of fitness for a particular purpose.

I.R.I.S. shall not be liable for errors contained herein or for incidental or consequential damages in connection with the furnishing, performance, or use of this material.

### Safety Instructions

Follow these safety instructions when setting up and using the scanner:

- Read all these instructions, and follow all warnings and instructions given in this document.
- Place the scanner close enough to the computer for the interface cable to reach it easily.
- Never handle the scanner with damp or wet hands, in nomadic mode, or when used as a fixed unit.
- When connecting this product to a computer or other device with a cable, ensure the correct orientation of the connectors. Each connector has only one correct orientation. Inserting a connector in the wrong orientation may damage both devices connected by the cable.
- Other than placing a mini SD card or new batteries in the openings provided for the purpose and indicated on the scanner, do not insert objects into any opening as they may touch dangerous voltage points or short out parts and lead to a risk of electrocution.
- Place the product on a flat, stable surface large enough to safely hold the product and the document to be scanned.
- Never disassemble the scanner.
- If the product overheats or produces smoke or an unusual odour, discolours or becomes deformed in an abnormal way, immediately turn off the scanner, remove the batteries where applicable, and disconnect the cables. Stop using the scanner and contact your dealer or IRIS customer support to receive instructions on the procedure to follow.
- Take care not to drop the scanner or expose it to physical impacts.

- Do not place or store the scanner outdoors, in a car, near heat sources, in locations that are dusty, damp or exposed to impact, vibration, condensation, high temperatures, sunlight, strong light, or rapid changes in temperature or humidity.
- Never attempt to disassemble, modify, or repair the scanner or any of its components yourself.

### *FCC Regulations*

This equipment has been tested and found to comply with the limits for a Class B digital device, pursuant to Part 15 of the FCC Rules. These limits are designed to provide reasonable protection against harmful interference in a residential installation. This equipment generates, uses, and can radiate radio frequency energy and, if not installed and used in accordance with the instruction manual (available at [www.irislink.com/start](http://www.irislink.com/start)) that may cause harmful interference to radio communications.

However, there is no guarantee that interference will not occur in a particular installation. If this equipment does cause harmful interference to radio or television reception, which can be determined by turning the equipment off and on, the user is encouraged to try to correct the interference by one or more of the following measures:

- Increase the separation between the equipment and receiver.
- Connect the equipment into an outlet on a circuit different from that to which the receiver is connected.
- Consult the dealer or an experienced radio/TV technician for help.

This device complies with Part 15 of the FCC Rules. Operation is subject to the following two conditions: (1) This device may not cause harmful interference, and (2) this device must accept any interference received, including interference that may cause undesired operation. Changes and modifications to this equipment not specifically approved by IRIS may void the user's authority to operate this equipment. Shielded cables must be used with this equipment to maintain compliance with FCC regulations.



### *European Union Regulatory Notice*

Products bearing the CE marking comply with the following EU Directives:

- Low Voltage Directive 2014/35/EC
- EMC Directive 2014/30/EC
- Restriction of the use of certain hazardous substances (RoHS) Directive 2011/65/EU
- RED (Radio Equipment Directive) (2014/53/EC)

CE compliance of this product is valid if powered with the correct CE-marked AC adapter provided by I.R.I.S. s.a.

This product satisfies the Class B limits of EN55022, EN55024, safety requirements of EN 60950 and ROHS requirements of EN50581.

\*This product is certified as Class 1 LED product.





### *Disposal of Waste Equipment by Users in Private Households in the European Union*



This symbol on the product or on its packaging indicates that the product can not be disposed of with your other household waste. Instead it should be sent to appropriate facilities for recovery and recycling in an effort to protect human health and the environment. For more information about where you can drop off your waste equipment for recycling, please contact your local city office, your household waste disposal service or the shop where you purchased the product.

