

This Quick User Guide helps you get started with the **IRISPen™ Express 7**.

The descriptions in this guide are based on the Windows® 7 Operating System. All information is subject to change without prior notice.

For more information about the IRISPen™ features, refer to the application's Help file, or to www.irislink.com/support/userguides.

1. Introduction

IRISPen™ Express 7 is a handy pen scanner that allows you to scan lines of text into any word processing or text editing applications. With IRISPen™ Express 7 you can also scan lines as images, to scan mathematical formulas for instance.

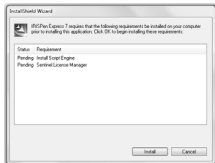
Note that with IRISPen™ Express 7 you scan one line at a time. IRISPen™ Express 7 supports 33 languages.

2. Installation and Activation

2.1 Installation

Important: make sure you have the required administration rights on your computer to do the installation.

1. Insert the **IRISPen™** disc in the CD-ROM drive of the computer.
The setup menu is displayed automatically. (If the menu does not start run **setup.exe** from the disc.)
2. Click **Install**. Then follow the on-screen instructions.
3. Click **Finish** to complete the installation.



2.2 Activation

When the installation is completed, you are prompted to activate the application.

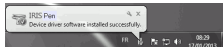
1. Click **Next** in the screen that appears.
2. Enter the serial number, and click **Activate**.
Note: you need an internet connection to do the activation.
Note: you find the serial number on the back of the CD-ROM sleeve.
3. Click **Finish** to close the Activation Wizard.



3. Getting Started with the IRISPen™

Step 1: Connect the IRISPen™

Plug in the IRISPen™ in a free USB port (USB 2.0 or higher). If the driver is installed successfully, a balloon message appears in the System Tray.



Step 2: Start the application

Double-click the **IRISPen™ 7** shortcut on the Desktop. When you start **IRISPen™ 7** for the first time, a **Welcome** screen appears to help you on your way.



Step 3: Watch the Tutorial

In the Welcome screen, click **Next** to start the **Tutorial**. The Tutorial shows you how to scan.



Step 4: Select the Scan Direction

When you have watched the Tutorial, click **Next** to choose the **Scan Direction**.

The direction in which you scan depends on whether you are right-handed or left-handed. Therefore, you need to select the scanning hand.

To change the scanning hand later on in the IRISPen™ ribbon:

1. Click the settings icon in the bottom right corner.
2. Click the **Personalizing** tab.
3. Select the scanning hand.
 - Select **Right hand** to scan lines from left to right.
 - Select **Left hand** to scan lines from right to left.



Step 5: Practice your Scanning

Click **Next** to display the **Practice** screen. Here you can practice your scanning and see what the results look like.

1. In the ribbon, select the language of your documents.
2. Click and slide the IRISPen™ over a line of text and check the results.

Tip: in this screen you can watch the **Tutorial** again, and also a **Demo**.



When you are done practicing you can do some actual scanning.

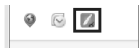
4. Scanning Text into Applications

1. In the IRISPen™ ribbon, click the tab **Scan to Doc / App**.



Important:

- Make sure the IRISPen™ is plugged in in a USB port. If it is not plugged in, a small cross is displayed on the IRISPen™ icon in the System Tray.
- Make sure the correct document language is still selected. (See Step 5.)



2. Open the application in which you want to scan.

Note that the application must be text-compatible. E.g. Microsoft Word.

3. Click and slide the IRISPen™ over the lines of text you want to scan. The recognized text appears in the application.

If the scanning was not performed correctly, animated scanning tips appear on screen.


Notes:

By default, IRISPen™ adds a space after each scan, and adds new scans on the same line in your application until the line is full.

To start a scan on a new line:

- Click and slide the IRISPen™ over a line of text.
- At the end of the line, click again with the IRISPen™.

The cursor now moves to the line below.

To modify the default settings, click the settings icon.  Then click the **Separators** tab and select the separators you want to apply.

Tips:

- Lines can either be scanned as text or as image. Select **Image** when scanning mathematical formulas for instance.
- To hear the text read out loud after scanning, select **Say out loud**.
- To scan numbers only, select numeral scanning: **123 ...**
- To scan single words, instead of full text lines, select **Single word**.

Place the scanner well in front of each word to start the scanning, and also end the scanning well after each word.




Scanning Tips

The following scanning tips help improve the scanning quality.

- Make sure that both sharp ends of the scanner tip always touch the page during scanning.
- Scan one line of text at a time. Make sure the line is approximately in the middle of the two scanner tips.
- Avoid scanning too slowly. Slide the IRISPen™ smoothly, in a fluid motion.
- Avoid applying excessive pressure. Otherwise, the scanning may result in jerky, uneven motions.

Troubleshooting

Should you experience issues when using the IRISPen™ Express 7:

- Consult the **Troubleshooting** section in the interface .
- Click the question marks in the interface to access the **Help** file.
- Contact the I.R.I.S. support section at www.irislink.com/support/IRISPen7.