



Quick User Guide – IRIScan™ Mouse Wifi



IRIScan™ Mouse Wifi

This Quick User Guide helps you get started with **IRIScan™ Mouse Wifi**.

The descriptions in this documentation are based on the Windows® 7 and Mac® OS X Mavericks Operating Systems. Please read this guide before operating this scanner and its software. All information is subject to change without prior notice.

Should you experience issues when using the IRIScan™ Mouse Wifi, consult the Frequently Asked questions or contact Technical Support at www.irislink.com/support.

1. Introduction

The IRIScan™ Mouse Wifi is an all-in-one wireless mouse and scanner. With the scan function, you can scan documents by sliding the mouse over them.

The scan results can be saved in several ways. You can drag-and-drop them to file folders and applications. Save them directly as Doc, PDF and XLS files. Share them via Mail, Facebook®, Twitter® and Flickr®. And send them to apps such as Cardiris™, Dropbox®, Evernote® and Google® Translate.

2. Legal Notices

Copyrights

Copyrights © 2012-2016 I.R.I.S. All Rights Reserved.

IRIScan™ Mouse Wifi is based on Dacuda SLAM Scan technology.

I.R.I.S. owns the copyrights to all documentation regarding IRIScan™ Mouse Wifi.

The information contained in this document is the property of I.R.I.S. Its content is subject to change without notice and does not represent a commitment on the part of I.R.I.S. The software described in this document is furnished under a license agreement which states the terms of use of this product. The software may be used or copied only in accordance with the terms of that agreement. No part of this publication may be reproduced, transmitted, stored in a retrieval system, or translated into another language without the prior written consent of I.R.I.S.

This documentation uses fictitious names as examples; references to actual persons, companies or organizations are strictly coincidental.

Trademarks

The IRIScan™ Mouse Wifi logo and IRIScan™ Mouse Wifi are trademarks of Image Recognition Integrated Systems S.A.

OCR technology by I.R.I.S.

AutoFormat and Linguistic technology by I.R.I.S.

Dacuda® and SLAM Scan® are registered trademarks of Dacuda Ltd, Zurich, Switzerland.

Windows is a registered trademark of Microsoft Corporation in the United States and other countries.

All other products mentioned in this documentation are trademarks or registered trademarks of their respective owners.

3. Safety Precautions

Please heed the following safety precautions regarding IRIScan™ Mouse Wifi:

Warnings

Failure to heed these instructions may result in serious injuries or death.

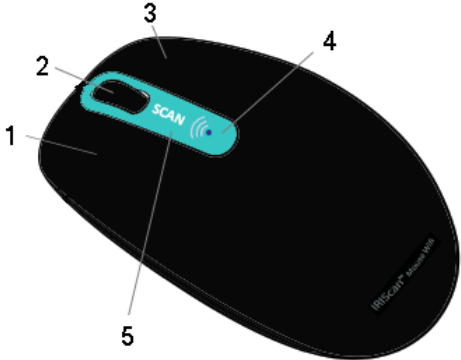
- Do not use the scanner in direct sunlight or near a hot object.
- Do not use the scanner near liquids or when liquids are spilled on the scanner.
- Do not point the scan surface towards your eyes during scanning.
- Stop using the scanner immediately and disconnect it from the computer when either of the two is emitting smoke, unusual odors or sounds.

Caution

Failure to heed these instructions may result in minor injuries or damage to the product.

- Do not use the scanner in extremely hot (over 35 °C) or cold (under 5 °C) areas.
- Do not use the scanner in a humid or dusty area.
- Do not use the scanner in an area with high static electricity.
- Do not disassemble, modify or try to repair the scanner.
- Do not apply excessive shock to the scanner.
- Do not bend the cable excessively.
- Be careful not to drop the scanner.

4. Hardware Overview

 <p>A top-down view of the black IRIScan Mouse Wifi. A teal-colored strip is located on the top surface, containing a 'SCAN' button and a battery indicator LED. Numbered callouts point to: 1. Left-click button, 2. Mouse wheel / Click button, 3. Right-click button, 4. Battery and Wifi indicator led, and 5. Scan button.</p>	<ol style="list-style-type: none"> 1. Left-click button 2. Mouse wheel / Click button 3. Right-click button 4. Battery and Wifi indicator led 5. Scan button
 <p>A bottom-up view of the IRIScan Mouse Wifi. A hand is shown peeling off a protective plastic cover from the scan surface. Numbered callouts point to: 6. On/Off button, 7. Scan surface (with the note 'Remove plastic before first use.'), 8. Mouse label, 9. Micro USB port, and 10. Scan sensors.</p>	<ol style="list-style-type: none"> 6. On/Off button 7. Scan surface Remove plastic before first use. 8. Mouse label 9. Micro USB port 10. Scan sensors

Before you get started:

Charge the IRIScan™ Mouse Wifi for **30 minutes**. To do so, plug it into a computer using the provided USB cable and power on the computer, or plug the IRIScan™ Mouse Wifi into a power outlet.

The battery life when using the scan function is about 48 hours.

To check the battery status, press the **Scan** button and watch the battery led:

- When the led blinks blue once, the battery is fully charged.
- When the led blinks red twice, the battery has low power.
- When the led blinks red once, the battery is almost flat and you need to recharge it.

Note however that even when the battery is flat you can still use the IRIScan™ Mouse Wifi as a regular wireless mouse.

Attention: the USB cable is only used to charge the battery, not to use the mouse. In order to use the mouse and its scan function you need to plug in the dongle.

5. Installing the IRIScan™ Mouse Wifi application

Important Notes:

Make sure you have the required administration rights on your computer to do the installation.

Make sure to install Cardiris™ before you install the actual IRIScan™ Mouse Wifi application, as explained below. Otherwise IRIScan™ Mouse Wifi will not be able to send scanned documents to Cardiris™.

Before you start the installation, switch on the **Wifi** on your computer. Wifi is required to connect to the IRIScan™ Mouse Wifi. If your computer does not support Wifi you need to acquire a Wifi adapter.

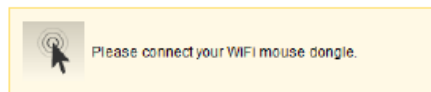
1. Go to www.irislink.com/softwaredownload.
2. Scroll down to **IRIScan™ Mouse Wifi** and click the right installer.

IRIScan™ Mouse

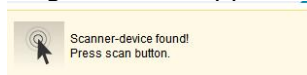


Windows
- IRIScan Mouse (Documentation - FAQ)

3. When the download is done, go to the location where you downloaded the package, and double-click the installer: **ISMWifi.exe** (Windows) or **ISMWifi.pkg** (Mac OS X).
4. Follow the on-screen instructions.
5. In the installation screen, click **Cardiris™** and go through the installation steps.
6. Return to the installation menu and click **IRIScan™ Mouse Wifi**. Again follow the on-screen instructions.
7. Click **Finish** to complete the installation.
When the installation is completed the IRIScan™ Mouse Wifi application starts automatically.



8. Unplug your regular mouse. Plug in the IRIScan™ Mouse Wifi dongle in a free USB port (USB 2.0 or higher) and switch the On/Off button at the bottom side of the mouse to **On**.
The driver is installed automatically within a few seconds.
9. When the device is found, press the **Scan** button to connect to the device.
After a few seconds, the black scanning interface appears.



6. Using the IRIScan™ Mouse Wifi

Step 1: Scan documents

- Place the mouse on the documents you want to scan.
- Press the **Scan** button once to start IRIScan™ Mouse Wifi.
- Move the mouse over the documents to scan the desired area.
- To stop scanning, press the **Scan** button again. This opens the **Edit** screen. To cancel the scanning, press **Esc** on the keyboard.



Scan screen functions

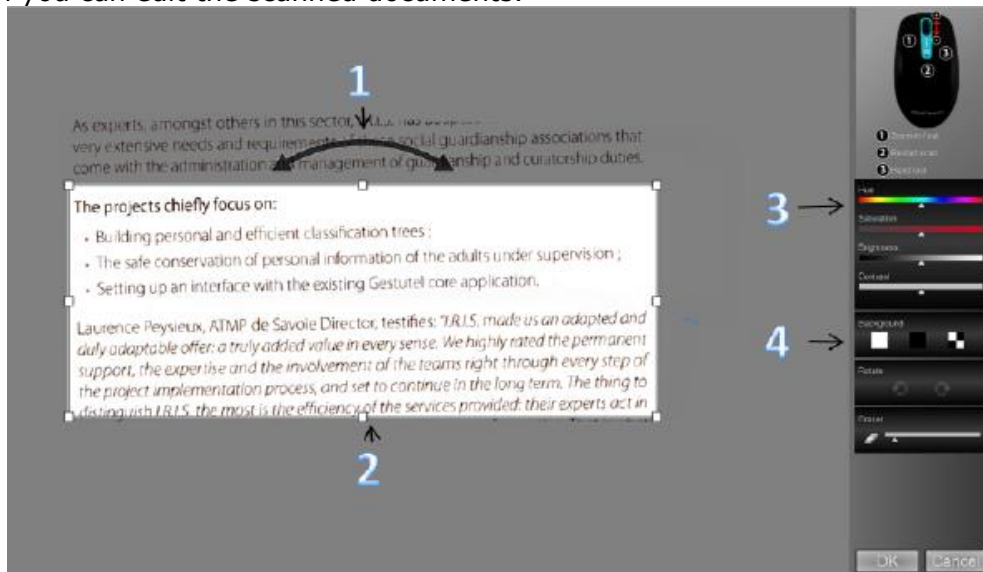
1. Remaining scan memory	2. Function description
3. Scan window; indicates current scan area	4. Scan image

Notes

- During scanning, IRIScan™ Mouse Wifi automatically zooms out and adjusts the view accordingly. To check whether the image is scanned properly, use the mouse wheel to zoom in/out on the image. You can scan documents of up to A3 size.
- If you move the IRIScan™ Mouse Wifi too fast, the scan window turns yellow or red. Slow down the scanning if needed.
- If the scanned image appears distorted, stop moving the IRIScan™ Mouse Wifi briefly. The image will be calibrated automatically.
- When the scanning is done, the scanned image is automatically cut into a rectangular shape and aligned horizontally to the background.

Step 2: Edit the scanned documents

In the Edit screen you can edit the scanned documents.



Edit screen functions

1. Rotate the scan result	3. Adjust the colors, brightness and contrast
2. Resize the scan area using the handles	4. Adjust the background

When you are done, click **OK** to accept the settings. To return to the Edit screen afterwards, click **Edit** in the main screen.

Note: when you click **Cancel** the scan result will not be saved to memory.

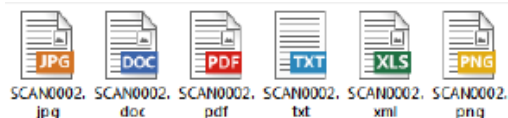
Step 3: Save and share the scanned documents

Before you save the scanned documents, make sure to select the correct recognition language. The default recognition language is set to **English**. Thanks to I.R.I.S.' powerful text recognition technology you can recognize documents in 130 languages.

Windows PC	Mac OS
<p>To change the text recognition language:</p> <ul style="list-style-type: none"> Click Options > Settings. Click Text Recognition. Select the required language(s) from the list. You can select up to 3 languages simultaneously. 	<p>To change the text recognition language:</p> <ul style="list-style-type: none"> Click Scanner Mouse > Preferences. Click Text Recognition. Select the required language(s) from the list. You can select up to 3 languages simultaneously.

1. Save documents in default applications.

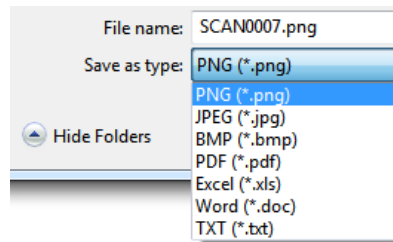
1. Double-click the required output format.



2. The document opens in your default application for that format.
3. Save the document from within your default application.

2. Save documents as output files.

1. Click **Save**.
2. Enter the file name and select a file type.
The supported file types are: png, jpeg, bmp, pdf, xls, txt and doc.



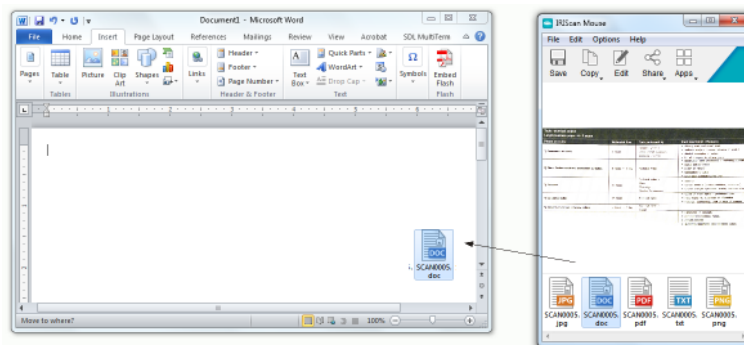
3. Then click **Save**.

Notes:

When scanning tables, it is recommended to save them as .xls files.

3. Drag-and-drop to applications.

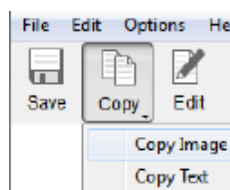
1. Choose in which format you want to save the document.
2. Open an application that supports the selected format.
E.g. Microsoft Word or Pages for Doc or Adobe Reader for PDF.
3. Drag-and-drop the required format icon to the application.



Note: you can also drag-and-drop the scan results directly to the Desktop or to file folders.

4. Copy as image or text.

1. Click **Copy**.



2. Select **Copy Image** or **Copy Text**.
3. Open an application that supports images or rich text, or both. E.g. Microsoft Word or Pages.
4. Then click **Paste** inside that application.

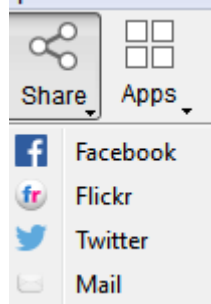
Note: you can also use the copy-paste shortcuts.

5. Share images via Mail, Facebook, Twitter and Flickr

Note: when using the Share functions, the scans are always sent as **images**.

1. Click **Share**.
2. Select the required application.
Note that you need a valid Facebook, Twitter or Flickr account and an internet connection to share scans via these applications.

Also note that a default mail application, such as Microsoft Outlook, must be installed and configured on your system. Web mail is not supported.



3. A Login window appears. Now log in to your account.

6. Send documents to apps

Cardiris™

When scanning business cards, you can recognize and store them in Cardiris™, I.R.I.S.' powerful business card scanning solution and organizer.

Important: Cardiris™ must have been installed before you installed the IRIScan™ Mouse Wifi application. If that is not the case, uninstall IRIScan™ Mouse Wifi, and then reinstall it including Cardiris™.

1. Click **Apps > Cardiris™**.
2. Cardiris™ opens and displays the scan.
3. Now you can process the business card:
 - Double-click your scanned card to display it.
 - Select the appropriate country from the list.



- Then click **Recognize**.
The data is extracted from the card and filled in in the corresponding fields.

For more information, see the Cardiris™ Help file.

Evernote

Your scans can be sent to Evernote. If your scans contain text, both the recognized text and the image are stored in Evernote.

1. Make sure the Evernote application is installed on your computer.
2. Make sure you are logged in to your Evernote account.
3. In IRIScan™ Mouse Wifi click **Apps > Evernote**.
The following message appears: **Evernote - Files synchronized with Evernote**.
4. The scans have now been sent to Evernote.

Dropbox

Your scans can be sent to Dropbox. They are saved both as text files (.doc) and as image files (.jpg) to your Dropbox folder.

1. Make sure the Dropbox application is installed on your computer.
2. Make sure you are logged in to your Dropbox account.
3. In IRIScan™ Mouse Wifi click **Apps > Dropbox**.
The following message appears: **Dropbox - Files synchronized Dropbox**.
4. The scans are sent to the Scanner Mouse folder within your Dropbox.

Google Translate

Your scans can be translated with Google Translate.

1. Make sure your computer is connected to the internet.
2. In IRIScan™ Mouse Wifi click **Apps > Google Translate**.
3. The recognized text in the scans is sent to Google Translate.
Note: make sure you have selected the correct recognition language in IRIScan™ Mouse Wifi (See [Step 3](#)).

Important note: when you are done using the IRIScan™ Mouse Wifi, make sure to switch the Power button to **Off** to save battery power.

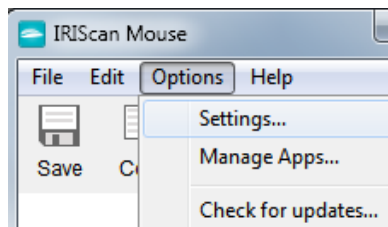
7. Configuration

In this section we discuss the settings that can be configured in IRIScan™ Mouse Wifi.

Settings

To access the Settings in Windows:

- Click **Options > Settings**.



To access the Settings in Mac OS X:

- Click **Scanner Mouse > Preferences**.



General

- Select the required **user interface language**.
The interface is available in 22 languages. The default language is English.
- Select the required **scan resolution**:
Low = 100 dpi.
Medium = 200 dpi.
High = 300 dpi.
Full = 400 dpi.
Important: to obtain satisfactory text recognition results, choose **High**. When scanning Arabic or Asian languages, select **Full**.
- Determine the **Window behavior** of IRIScan™ Mouse Wifi.

Save

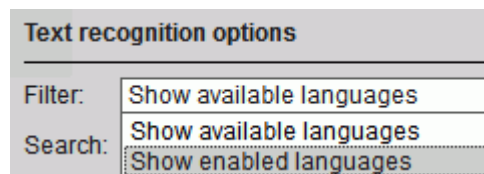
- Determine the file name prefix. The default file name prefix is **Scan**. Type in a different name if required.
- Select the JPEG Quality compression of the images: High, Medium or Low.
This option determines in which resolution the images will be saved.
Low = 100 dpi.
Medium = 200 dpi.
High = 300 dpi.
Important: to obtain the best results, select **High**.

Updates

Choose how you want to check for updates: **silently**, **automatically** or **manually**. An internet connection is required to check for updates.

Text Recognition

Select the text recognition language from the list. IRIScan™ Mouse Wifi recognizes 130 languages. Selecting the correct text recognition language is essential to obtain satisfactory recognition results. You can select up to 3 languages simultaneously.
To see which languages are enabled, click the drop-down list next to **Filter**. Then click **Show enabled languages**.



Proxy Settings

Changing the proxy settings is only required when you use a proxy server (an intermediary server) to connect to the internet. By default, IRIScan™ Mouse Wifi automatically detects the proxy settings. To manually set the proxy settings, select **Manual settings**. If necessary, contact your system administrator.

Advanced

It is recommended **not** to modify the advanced settings. Only modify them if you are an expert user.

Manage Apps

Some of the apps and social media that are available in the IRIScan™ Mouse Wifi have settings that can be managed.

To manage apps:

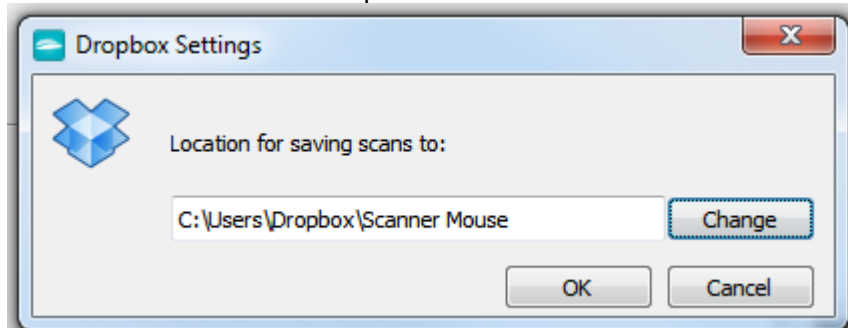
- Click **Options > Manage Apps**.

Cardiris

No settings to be managed.

Dropbox:

Click **Settings** and define in which folder the output files must be stored.

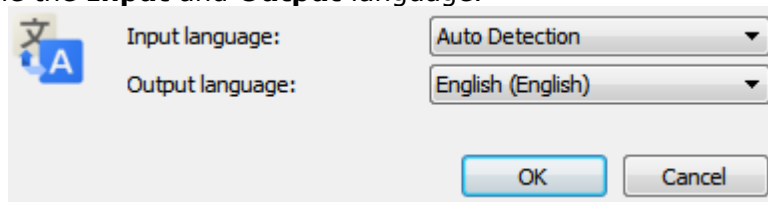


Evernote

No settings to be managed.

Google Translate

Click **Settings**, and define the **Input** and **Output** language.



Facebook, Flickr, Twitter

Click **Settings**, and select **Keep me logged in**. This way you don't have to log in each time you want to share an image.

Mail

No settings to be managed.

8. Scanner Specifications

Product Specifications

Mouse sensor	Optical Mouse sensor (1500 DPI)
Scanner size (H x L x D)	3,8 x 11,5 x 6 cm (1.18 x 4.3 x 2.36 in)
Scanner weight	200g (0.44 lbs)
Max. scanning size	Up to A3 (depending on graphical card configuration)
DPI resolution	Up to 400 DPI
Scanner window size (H x L)	4.3 x 2 cm
USB type	2.0

Wireless Specifications

Standard	WiFi: IEEE 802.11 b/g/n Wireless Mouse : Proprietary
Wireless LAN	DHCP
Frequency Range	WiFi : 2.412 to 2.462 GHz Wireless Mouse : 2.4GHz Proprietary
Number of selectable channels	WiFi : 11 channels (automatic) Wireless Mouse : 78 channels (automatic)
Data Rate	WiFi : 72Mbps (max) Wireless Mouse : Proprietary
Transmit Power (EIRP)	WiFi : +7.8dBm Wireless Mouse : -4.1dBm
Security	WiFi : NIL Wireless Mouse : Proprietary

Battery Specifications

Type	Built-in rechargeable Lithium battery
Model	602248
Rated capacity (mAh)	650
Rated voltage (V)	3.7
Maximum voltage	4.2
Dimensions of battery (mm)	60x22x48
Weight	~70g

All software and drivers are available for download at www.irislink.com/softwaredownload.

9. Compliance

RoHS and WEEE Compliance

This product is compliant with RoHS Regulations of the European Parliament and Council Directive on the Restrictions of the Use of Certain Hazardous Substances in Electrical and Electronic Equipment (2002/95/EC), and with the Waste Electrical and Electronic Equipment (WEEE) Directive (2002/96/EC).

FCC Radio Frequency Interference Statement

This equipment has been tested and found to comply with the limits for the class B digital device, pursuant to part 15c of the FCC Rules. These limits are designed to provide reasonable protection against interference in a residential installation. This equipment generates, uses and can radiate radio frequency energy and if not installed, and used in accordance with the instructions, may cause harmful interference to radio communications. However, there is no guarantee that interference will not occur in a particular installation. If this equipment does cause harmful interference to radio or television reception, which can be determined by turning the equipment off and on, the user is encouraged to try and correct the interference by one or more of the following measures:

- Reorient or relocate the receiving antenna.
- Increase the separation between the equipment and receiver.
- Connect the equipment into an outlet on a circuit different from that to which the receiver is connected.
- Consult the dealer or an experienced radio/TV technician for help.

This equipment has been certified to comply with the limits for a class B computing device, pursuant to FCC Rules. In order to maintain compliance with FCC regulations, shielded cables must be used with this equipment. Operation with non-approved equipment or unshielded cables is likely to result in interference to radio and TV reception. The user is cautioned that changes and modifications made to the equipment without the approval of manufacturer could void the user's authority to operate this equipment. This device complies with part 15c of the FCC Rules. Operation is subject to the following two conditions: (1) This device may not cause harmful interference, and (2) this device must accept any interference received, including interference that may cause undesired operation.

Should you experience issues when using the IRIScan™ Mouse Wifi, consult the Frequently Asked questions or contact Technical Support at www.irislink.com/support.