



IRIS Powerscan - EMS

How to revoke a License number

Revision History

Date	Description	Author
20180227	0.1 – Creation	TW
20180307	0.2 – Feedback implementation	TW



Table of Contents

1. Introduction	3
2. Target Audience	3
3. How to revoke a License number?	4
4. Legal Notice.....	6
4.1 Copyright	6

I.R.I.S. SA/NV
Rue du Bosquet 10
B-1348 Louvain-la-Neuve

P: +32 (0) 10 45 13 64
F: +32 (0) 10 45 34 43

www.irisdatacapture.com

Canon
CANON GROUP



1. Introduction

For some good reason, as a user of IRIS Powerscan, you might need to re-activate your IRIS Powerscan License. To do so, the procedure will ask you to revoke the previous license number before being able to activate a new one.

2. Target Audience

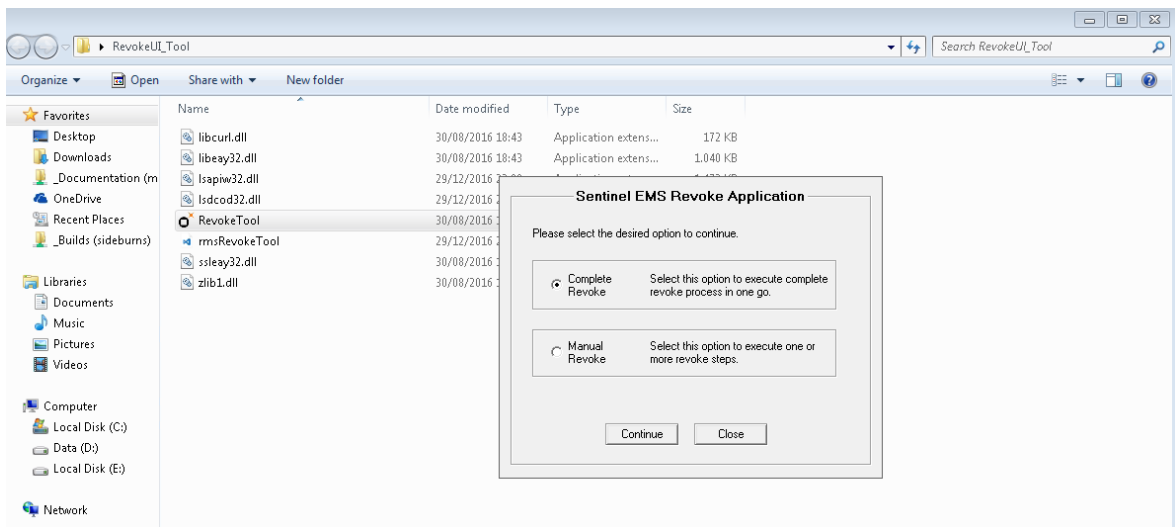
This documentation is intended for Clients and Users of IRIS Powerscan.



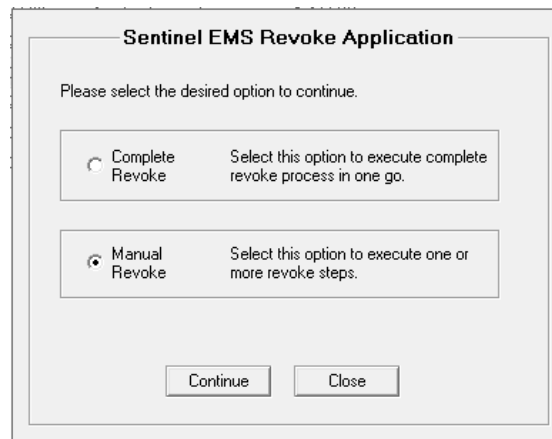
3. How to revoke a License number?

This procedure assumes that your current **EID** (license number) is activated.

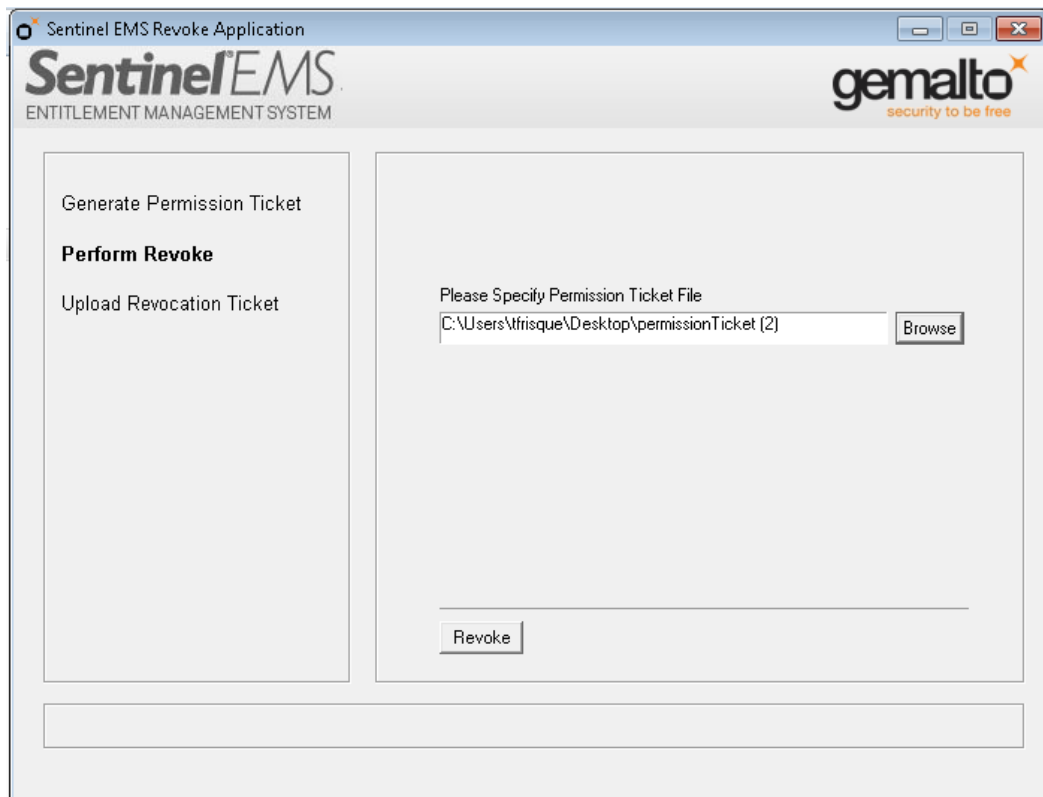
- 1) Send an email to **IRIS Activation** asking to reset or re-activate your license:
activation@iriscorporate.com
- 2) You receive from the Activation Team a file named **Permission Ticket** and a tool named **RevokeTool.exe**
- 3) **Open** the app **RevokeTool.exe**



- 4) Select **Manual Revoke**



- 5) Click **Continue**
- 6) On the left Menu, select **Perform Revoke**
- 7) Then Browse to select the **permissionTicket** you received



- 8) Click **Revoke**. A confirmation popup window opens.
- 9) Enter a name for the **Revocation Ticket** and click **Save**.

Then you send the **Revocation Ticket file** back to activation@iriscorporate.com.

Once validated by the Activation Team, the EID will be re-credited with one activation.

The Activation Team will send you an email to confirm that the activation has been re-credited.

! Once a license is revoked on a computer, that license cannot be activated again or 're-credited' on the same computer.



4. Legal Notice

4.1 *Copyright*

© 2002-2018 I.R.I.S. All Rights Reserved.

I.R.I.S. SA/NV
Rue du Bosquet 10
B-1348 Louvain-la-Neuve

P: +32 (0) 10 45 13 64
F: +49 (0) 10 45 34 43

www.irisdatacapture.com

Canon
CANON GROUP