

IRIScan™ Book 2

Getting Started

BEFORE YOU BEGIN: **PREPARE THE SCANNER**

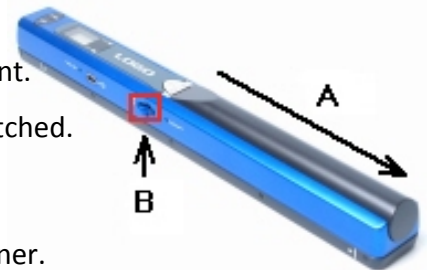
- Insert 2 AA alkaline or NiMH batteries into the battery compartment.
- Insert a microSD™ card gently into the card slot until the card is latched.



Do not force the card into the slot!



Make sure to format the microSD card before using the scanner.



Formatting the microSD card:

- Press the **⏻/Scan** button for 2 seconds to power on the scanner.
- Insert a pointy object, like a paper clip, into the **Format** button. The letter **F** appears on the screen.
- Now click the **⏻/Scan** button to format the card. The card icon on the screen blinks until the formatting is complete.

USING THE SCANNER

STEP 1: Choose the scanner settings

- Press the **⏻/Scan** button for 2 seconds to power on the scanner.
- Press the **C/BW** button to choose between **color** and **mono** (black-and-white) scanning.
- Press the **DPI** button to choose between a **high** (600 dpi) or **low** (300 dpi) resolution.



STEP 2: Scan your documents

- Place your scanner at the **top** of the page you want to scan.

Tip: Make sure the IRIScan™ Book is still powered on.

- Press the **⏻/Scan** button. The scan led lights up green.
- Slide the scanner **slowly** and **steadily** over the page.

Tip: Hold the document steady with one hand while scanning.

- To stop scanning, click the **⏻/Scan** button again.

If the **ERR.** led lights up red a scan error occurred. See **Troubleshooting information** on page 5.

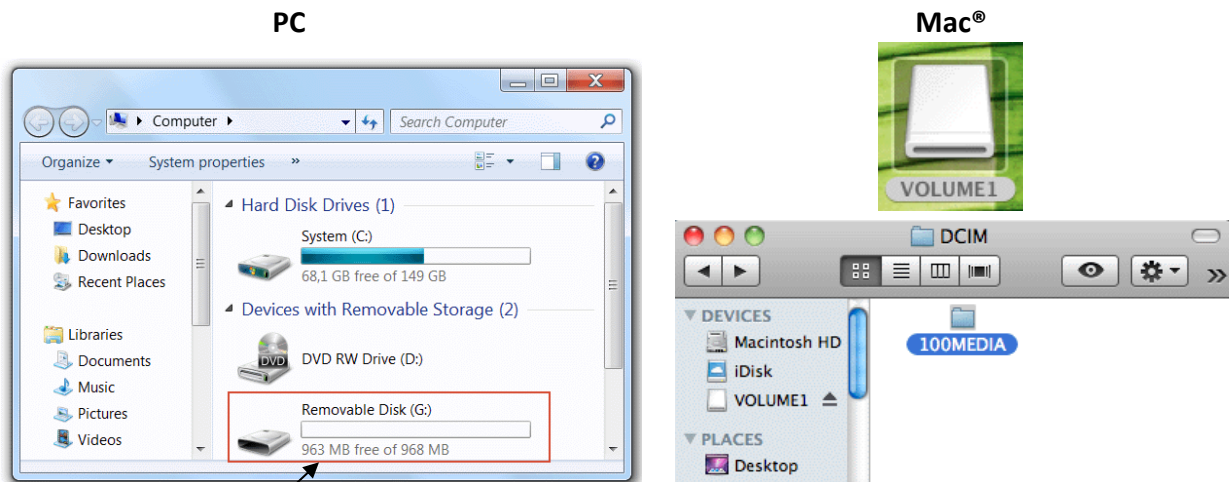


STEP 3: Transfer the documents to your computer

- Plug the USB cable in both the IRIScan™ Book and your computer.

Tip: Make sure the IRIScan™ Book is still powered on.

- The card memory containing your documents is displayed on your computer.



- Open the card memory and drag and drop your documents to your computer.

The documents are located in the folder **DCIM\100MEDIA** of the removable disk.

Step 4: Process your documents with Readiris™

The documents you scan with the IRIScan™ Book can be processed with Readiris™.

For information on how to process your documents with Readiris™ on a PC or a Mac, see the **Readiris™ Quick User Guide** you find on the **Readiris™** cd-rom.

Tips

Adding a timestamp to your images

Your IRIScan™ Book 2 scanner adds a timestamp to the images you scan. This way, you know exactly when they were scanned.

To get a correct timestamp the **Time Settings** need to be set:

- Press the **⏻/Scan** button for 2 seconds to power on the scanner.
- Insert a pointy object, like a paper clip, into the **Time set** button:
 1. Then press **C/BW** or **DPI** to change the (1) **year**. Press **⏻/Scan** to confirm and move on to the (2) **month**.
 2. Repeat step 1 for the (2) **month**, (3) **date**, (4) **hour** and (5) **minutes**.

Scanning small, thick books

When you're scanning a small, thick book it may occur that the margin is too narrow and you're not able to scan the entire text.

You can solve this problem by scanning the pages horizontally and rotating your images with Readiris™.



Another solution is to place the scanner at the bottom of the page, turn it upside down and scan upwards. You'll notice that the scanner's right margin is smaller than the left.



Technical Note


Minimum System Requirements

| | |
|------------------|--|
| Operating system | Windows® 7, Vista®, XP and Mac OS® 10.4 or above (no driver installation required) |
| CPU | Pentium® II or above |
| RAM | 256 MB |
| Hardware | USB port |

Scanner Specifications

| | |
|--|---|
| Image sensor | A4 Color Contact Image Sensor |
| Resolution | Low resolution: 300x300 dpi (default) High resolution: 600x600 dpi |
| Maximum scanning speed for A4-size document | Color High resolution: 13 seconds Mono High resolution: 6.0 seconds Color Low resolution: 3.0 seconds Mono Low resolution: 2.0 seconds |
| Capacity (based on 1GB microSD card*) *The number of scans may vary depending on the content complexity | 600 dpi color: 200 images (minimum) 600 dpi mono: 290 images (minimum) 300 dpi color: 780 images (minimum) 300 dpi mono: 1280 images (minimum) |
| Scan width | 8.27" |
| Scan length | 300 dpi: 50" (maximum) 600 dpi: 25" (maximum) |
| File format | JPEG |
| LCD | Scanning status display |
| Auto Power Off | 3 minutes |
| USB Port | USB 2.0 high speed |
| External memory | MicroSD card |
| Standard battery | 2 AA alkaline or NiMh rechargeable batteries |

Troubleshooting information

| Problem | Cause | Solution |
|---|---|--|
| I cannot turn on the scanner. | Low battery power. Battery not inserted properly. | Replace the batteries. Insert the batteries correctly. |
| Pictures cannot be saved after I've scanned them. | There's no microSD card in the card slot. The microSD card is full. The microSD card has not been formatted properly. | Insert a microSD card. Move the images from the microSD card to your computer to clear storage space on the card. Properly format the card. |
| My computer does not recognize the scanner when I connect it (the removable disk is not displayed). | Connection failure. | Make sure both ends of the USB cable are connected securely. Restart your computer if necessary. |
| The battery life is very short. | The wrong type of batteries is being used. | Replace the current batteries with 2 new AA alkaline or NiMH batteries. |
| My scanner generates blurry images. | The scanner lens is probably dirty. | Clean the lens with a soft dry cloth. |
| The ERR. led is on when scanning a document. | You're sliding the scanner too quickly over your documents. | Press the  /Scan button to scan your document again, steadily and slowly. |