



## IRISPen Getting Started Guide

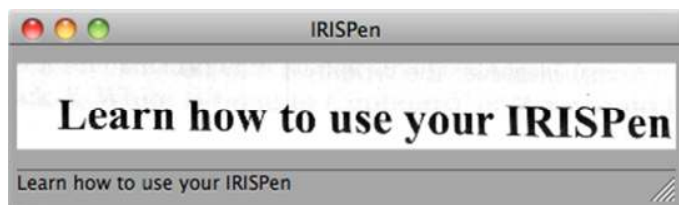
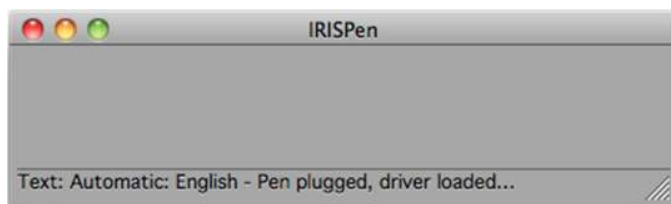
### IRISPen Executive



The initial view in the software is the palate which contains the commonly used options for the software. This can be turned on/off in the View menu along with the Scan Window.

To the right is the Scan Window showing the initial view where it indicates the driver loaded and the preview scan showing the image and the converted text immediately below.

Prior to using the pen turn off the Scan Window to allow the output to go to your application.



The pen acts just like a keyboard but instead of typing you scan. Any application that you can type into the pen can too.

For right handed users hold the pen in your right hand, tilted to the right and scan left to right.



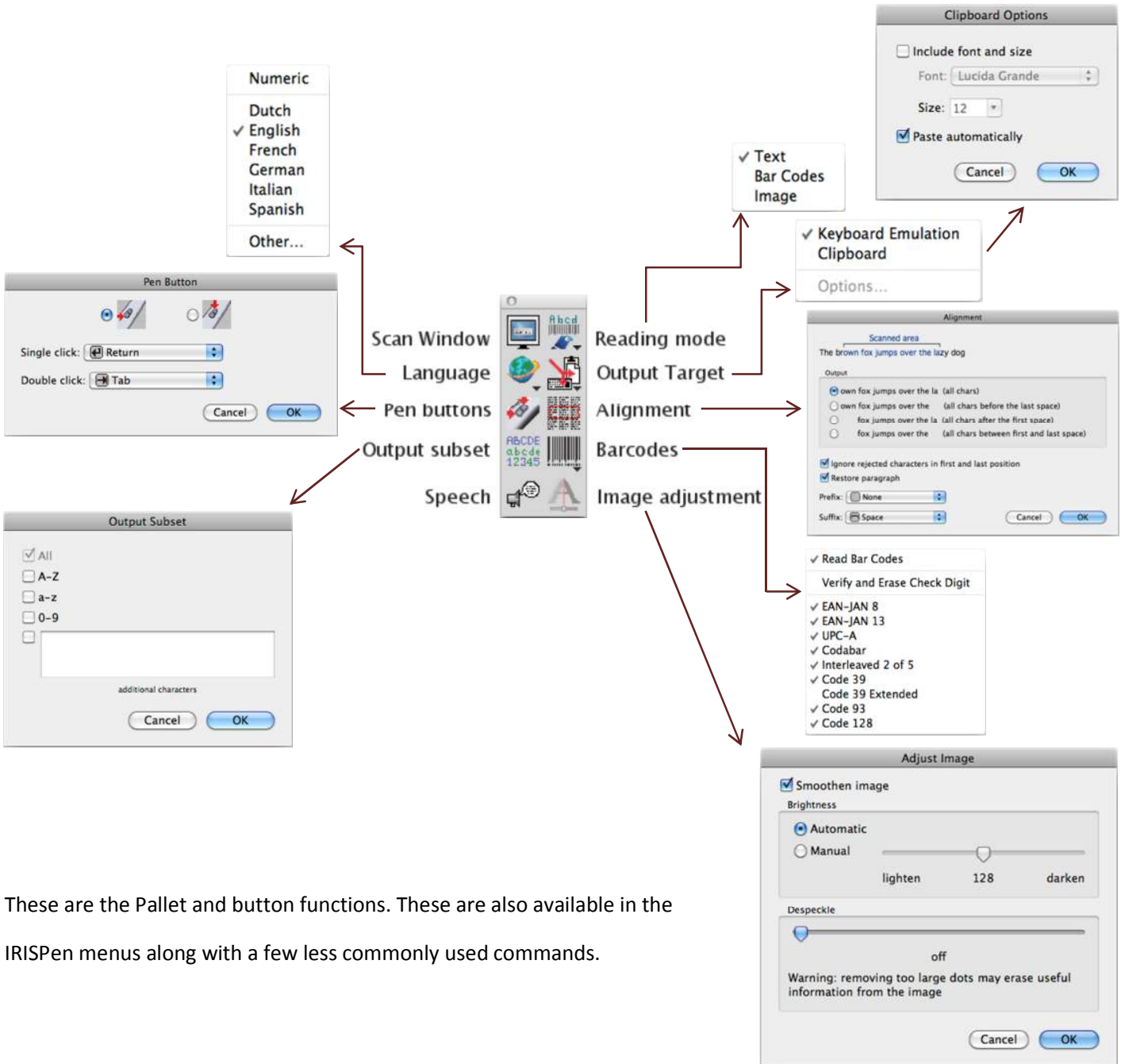
Left handers would set the software to left handed scanning and hold the pen in the left hand tilted to the left and scan right to left



Pictured is the results in Word but it could be Pages, Excel, web forms or others.

On first use you will be asked to calibrate the pen. Hold it down to the type of paper you are scanning from until you get the message that the calibration is complete. You can recalibrate anytime in the Options menu.





These are the Pallet and button functions. These are also available in the IRISPen menus along with a few less commonly used commands.



### **Pen Buttons**

Specify single and double click actions for the button on the side of the pen. Custom actions can be set using your own key sequence or user string.

### **Output Subset**

This is useful for limiting the information considered by the software to a limited number of characters. This can avoid confusion between similar characters such as 5 and S when used in conjunction with the Numeric setting in Languages.

### **Output Target**

The default mode is keyboard emulation, that is acting just like a keyboard. You can also output to the clipboard and set a particular font and size and perform the pasting into your target application automatically.

### **Alignment**

When scanning within a paragraph the default is to capture all character scanned. With this option you can set spaces as a way of limiting the information captured. It is also possible to add starting and ending codes. For instance you might set tab as a starting code to move to the next cell in a spreadsheet.

### **Barcodes**

Common Bar Code formats are supported with the ability to convert to text what the barcode symbolizes.

### **Image Adjustment**

It is not guaranteed that the information you want to capture is of good quality. If it is too dark or light or has stray marks you can adjust the software to compensate using this command.

### **Multiple Lines**

While still scanning one line at a time the results are held in memory until the scanning is complete. Press the button on the pen to release it to your application.

### **Small Print**

For point sizes below 10 points use this setting to boost the accuracy of the scan.

### **Invert Image**

For images with white text on a dark background use this setting to reverse the colors to black text on a white background.



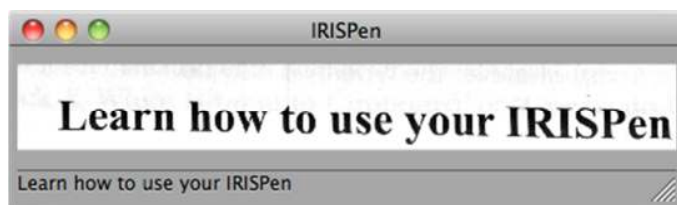
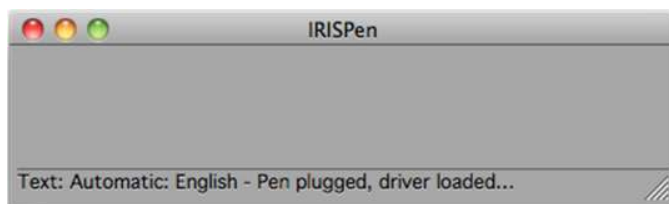
## IRISPen Express



The Express has the same ability to scan and send actual text to your application just as if you were typing it your self.

It lacks the following features present in the Executive version.

- Output subset
- Speech
- Alignment
- Barcodes
- Image Adjustment



## Updates

Product updates and information can be found on our Website.

<http://www.irislink.com/c2-350-17/Product-Updates.aspx>