

IRISPen[®] executive 6

Common items

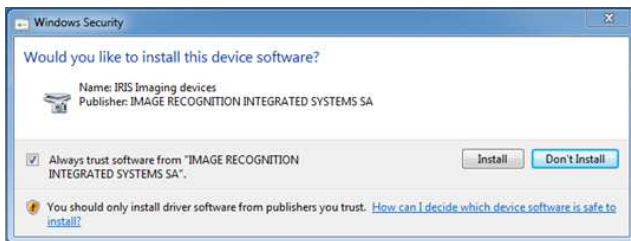
Install the pen software. On Windows Vista/Windows 7 is recommended that you disable the User Access Control first. You can re-enable once the pen is up and running.

Vista

Go to Start > Search box and type in MSCONFIG. The system configuration window will open. Go to the tools tab and look for the disable UAC entry. Highlight and click on launch. Close the resultant command prompt window and then click OK. Restart the computer for it to take effect. You can re-enable enable the UAC once the product is up and running.

Windows 7

Go to Start > Search and type in; UAC. Click on Change User Account Control settings. Move the slider all the way down and then restart the computer. You can re-enable the UAC once the product is up and running.



Check the box for Always Trust and click on Install to load the driver for the pen.

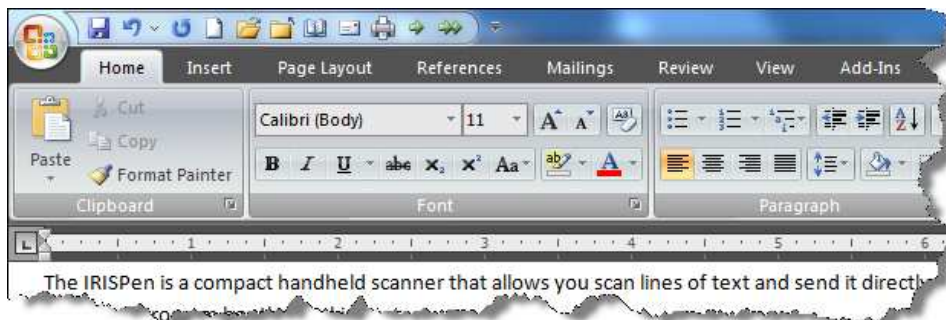
The pen can be used either right or left handed by enabling left handed scanning in the options menu.

Right handed user will hold the pen in their right hand with the pen slanted to the right resting flat on the angled base. You start at the left and pull the pen to the right.



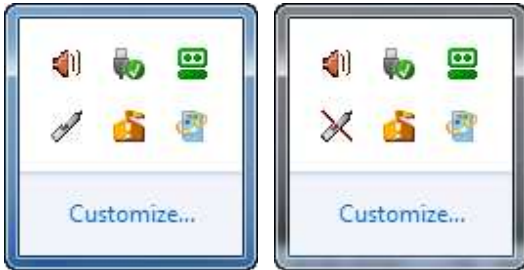
Left hander's will hold the pen in the left hand with it slanted to the left resting flat on the angled base and starting at the right side of the sentence and pulling the pen to the left.

The IRISPen is a compact handheld scanner that allows you scan lines of text and send it directly to whatever program has the blinking cursor. To use you would start the program, set any options and then click OK at the bottom of the Pen software window. From that point it **acts exactly like a keyboard** but instead of typing you scan.



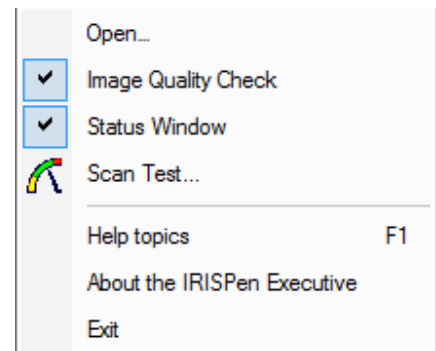
IRISPen[®] executive 6

When the software is running it minimizes to the notification area on the far right of the taskbar. Click on the up arrow on Windows 7 or the tray icon on Vista or XP to view

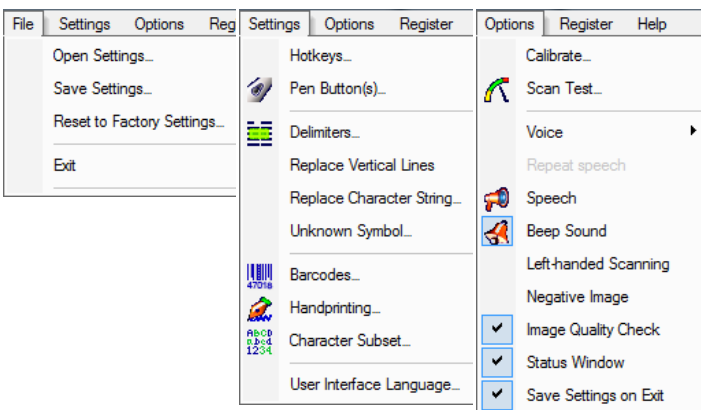


Note the pen icon on the lower left. The red line indicates that the pen is not plugged in or the driver is not loaded.

When you *right click* on the pen icon you have the options below available.



Menus allow you to access options such as Reset to Factory Settings, Scan Test and Pen Buttons among others.

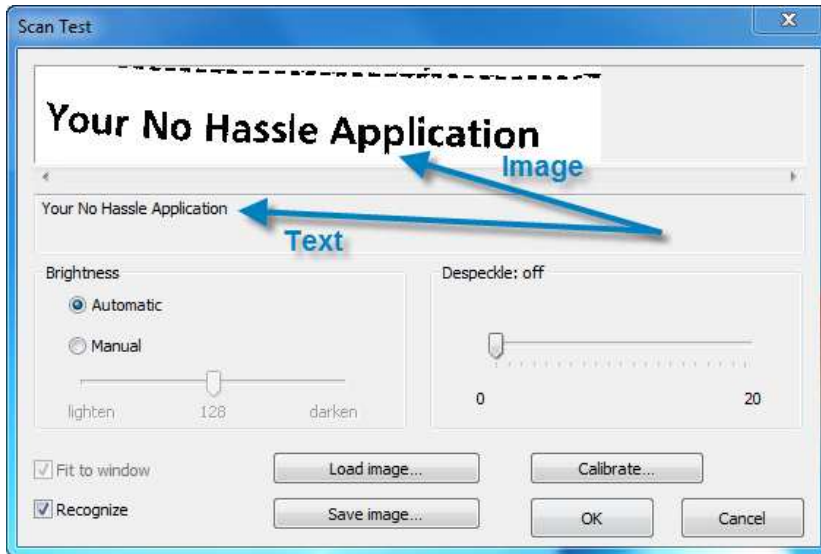


Set the options in the main pen window for the information you are working with and then click OK to minimize the software back to the notification area where it will run in the background waiting to convert the next scan.



When you scan the pen takes a picture of the text and sends it through the software where it is converted to text on the fly and sent to whatever program has the blinking cursor.

Go to Options > Scan test to view this and verify that you are getting both a good image and accurate results. Once this is confirmed click OK out of all pen windows and you are ready to scan.



On the Executive model there is an image adjustment option. Simply switch from Automatic to Manual and move the slider to fine tune the results.

For documents with stray marks or specs there is the Despeckle slider to help remove those marks and improve the results.

IRISPen express 6

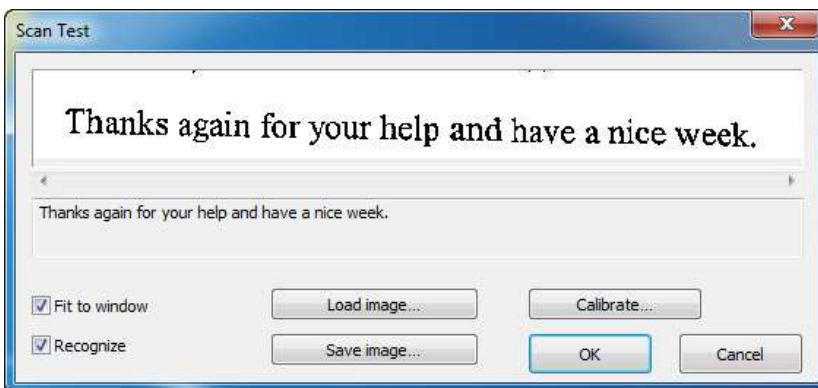
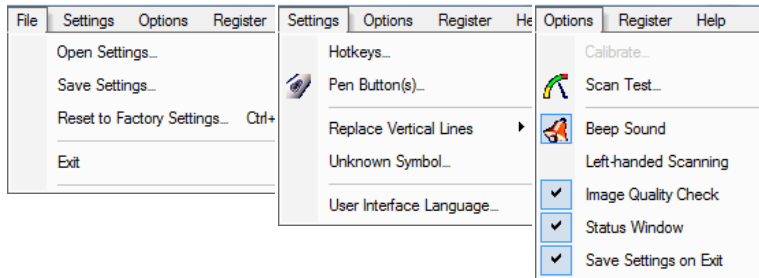
IRISPen Express

The express works the same as the executive model without the specialized features. It too scans converts and types the text into the application of your choice.



Set the options in the main pen window for the information you are working with and then click OK to minimize the software back to the notification area where it will run in the background waiting to convert the next scan.

Express version menus

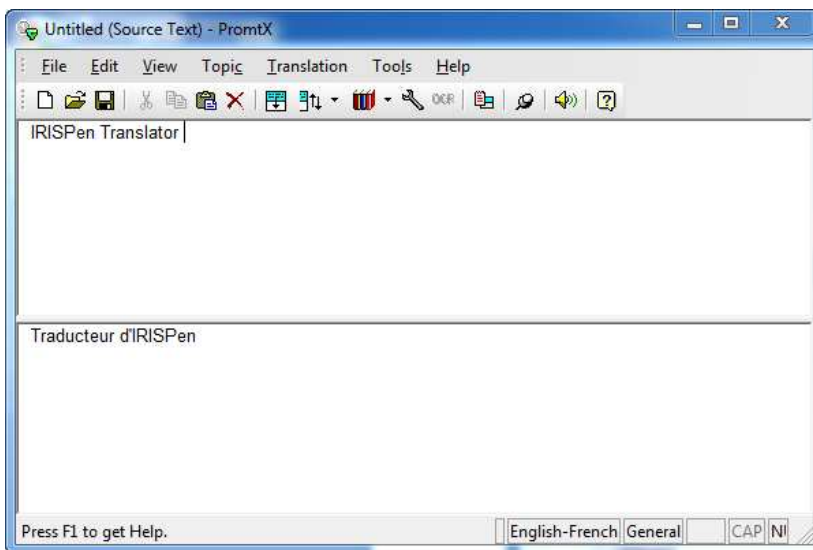


Note the scanned image above and converted text below.

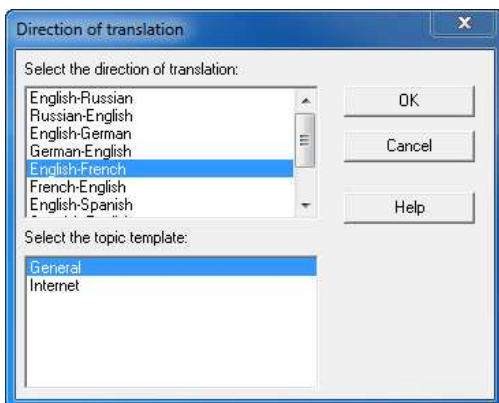
IRISPen translator 6



In the Translator there is an additional Radio button for Translator PromptX which is the translation component of the software.



It sends the results directly to that software where the translation is performed.



Use the translation menu to set the language and direction of translation. Afterwards you can copy the text to wherever you want it to go.