

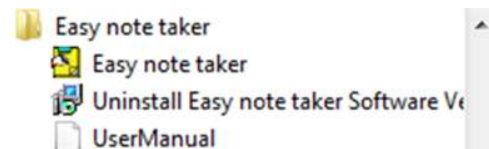
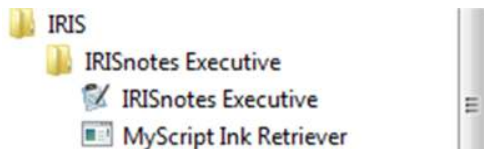
IRISnotes executive 1.0 Getting Started Guide

Installation

Install both the Mobile Note Taker and IRISnotes Executive. You will be asked to activate the Executive on first use. Click the Activate button and choose over the internet. Advance and enter the serial number on the CD sleeve and click activate.



Go to Start > All Programs to see these installed programs.



Offline notes – Receiver not connected

Charge the device by plugging it into a USB port directly on the computer. You will see the battery indicator on the upper right of the LCD screen. When the pen is brought in proximity to the unit you will see a pen icon appear indicating that it is ready to receive the notes.



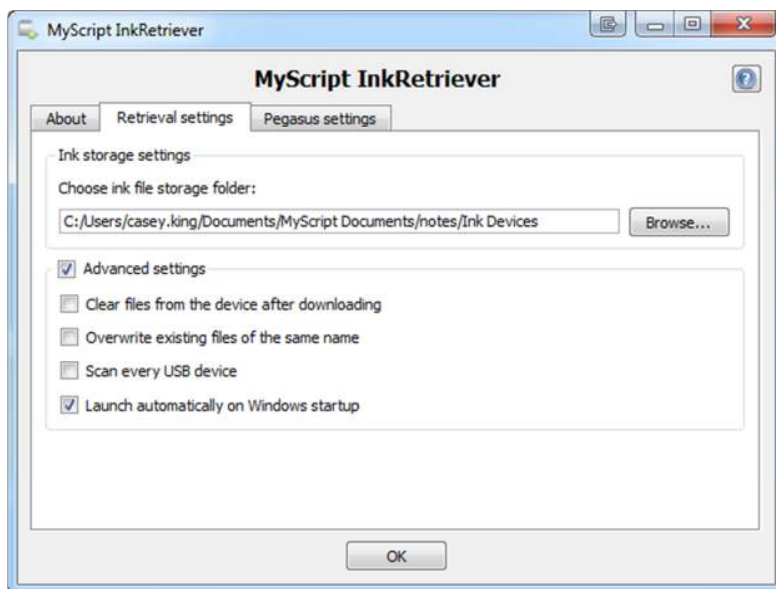
Place the receiver at the middle top of a legal pad or similar. You would then take your notes in neat and well-spaced handwriting. When you fill up the page you hold down the button on the receiver until the number increments from 0 to 1. Continue taking notes pressing the button to increment to the next page until done. Page 0 is the first page; Page 1 is the second, etc.



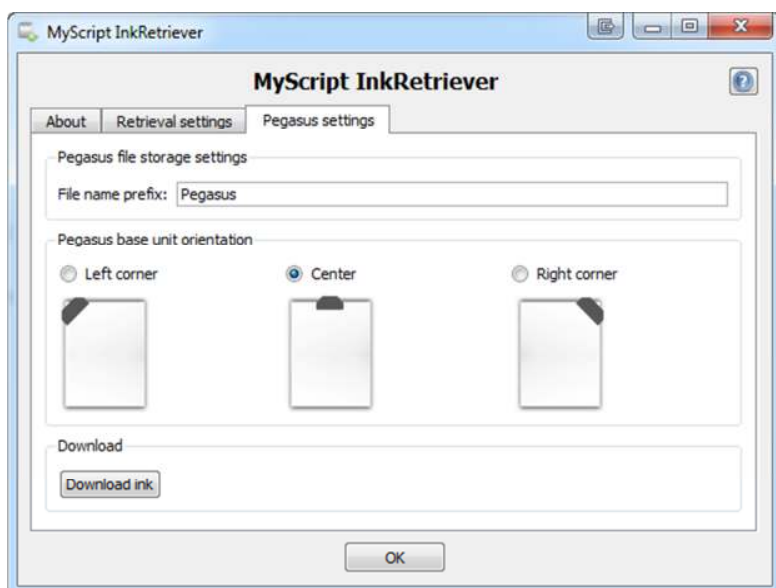
Connect the Receiver and you should see the My Script Ink Retriever window appear.

If not go to; Start > All Programs > Iris > MyScript Ink Retriever as pictured above

You would choose the Storage folder in the Retrieval tab would set the orientation that you used in the Pegasus Tab. Click on Download Ink to offload the files from the Receiver.



Note the clear files and Launch automatically check boxes.

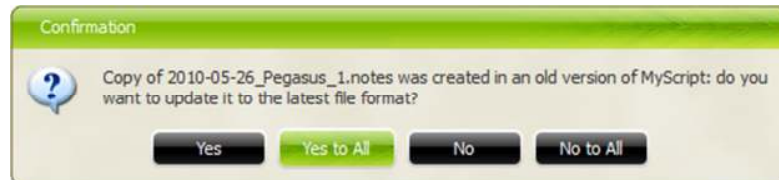


Choose File name prefix, the orientation of the receiver and then click Download Ink.

For Vista/Windows 7 the receiver must be used and set to middle top.



Start the IRISnotes Executive and it should find the notes automatically and import them in. Click Yes to All to bring them into the software.



You will see this window with the various notes available for selection and folders to the left. Double click on a note and then click on the Conversion settings button to set your options.



Click on Convert and it will display the converted results to the side of the note image. From here you can make any needed corrections and export to Word or Notepad. You can also save it as a picture using the export buttons on the bottom of the IRISnotes.

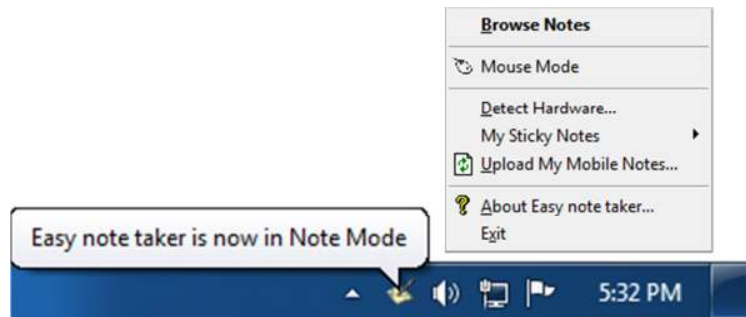
You can annotate the image on the left using the tools above.





Online

Connect the Receiver to the computer and start the Easy Note Taker software. You will see icon in the notification area on the far right of the taskbar. Right click on it to access options. Make sure it is in Note Mode.

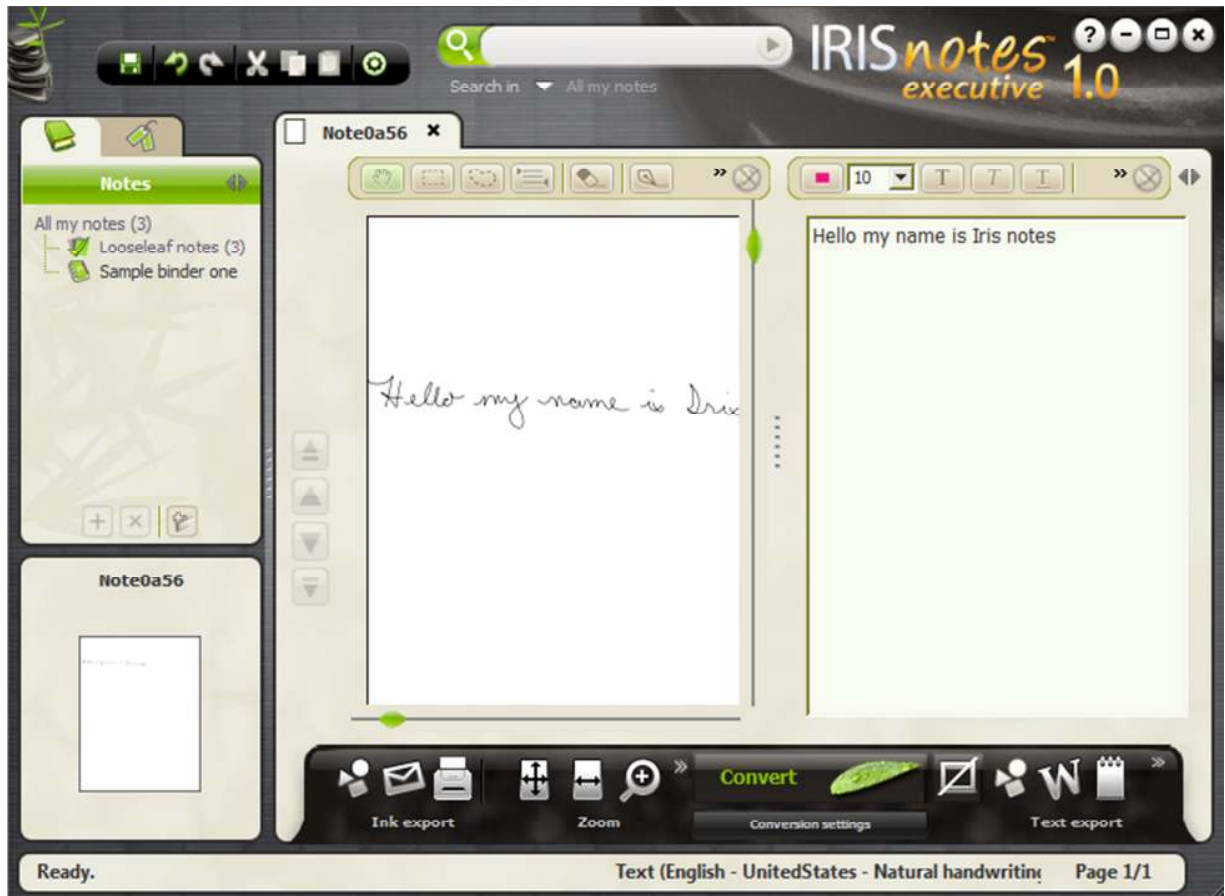


Begin writing and you will get this notes window with a tools palette on the left. Click the **A** icon to IRISnotes Executive where the conversion will be done as it was in the Offline mode.





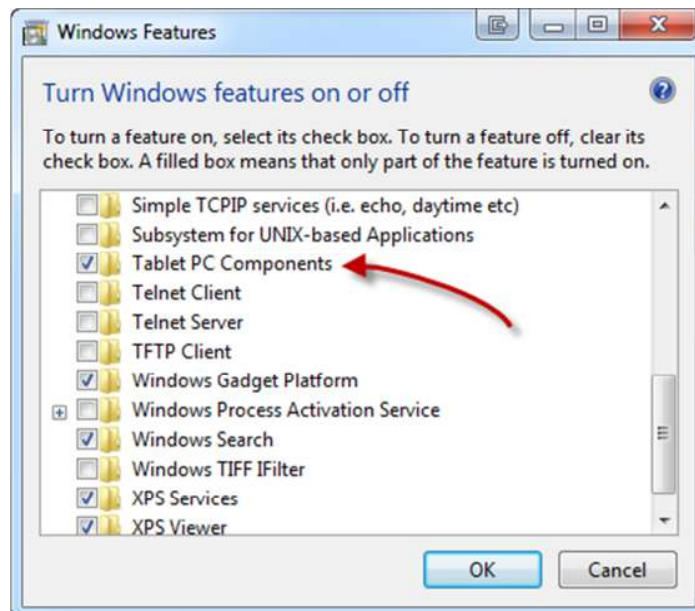
The image is displayed on the left and clicking convert displays the text on the right.



Tablet usage

If you are running Windows Vista or Windows 7, you can use the IRISnotes™ as a tablet PC to draw directly into Microsoft Office applications (requires at least Microsoft Office 2007 or 2010). This uses the IRISnotes hardware in conjunction with the Microsoft

1. Make sure that the Windows Tablet PC Components are installed.
 - Go to Control Panel > Programs and Features
 - In the left pane, click Turn Windows features on or off
 - Select Tablet PC Components and click OK.



2. Connect the IRISnotes™ receiver to a free USB port of the computer.
3. Open Microsoft Word / PowerPoint / Excel.
4. Select the Review tab in the Microsoft Office ribbon menu.
5. Click the Start Inking button in the ribbon menu. This button is only visible if the device is properly connected and detected by the system. You may have to restart Word/Excel/PowerPoint.

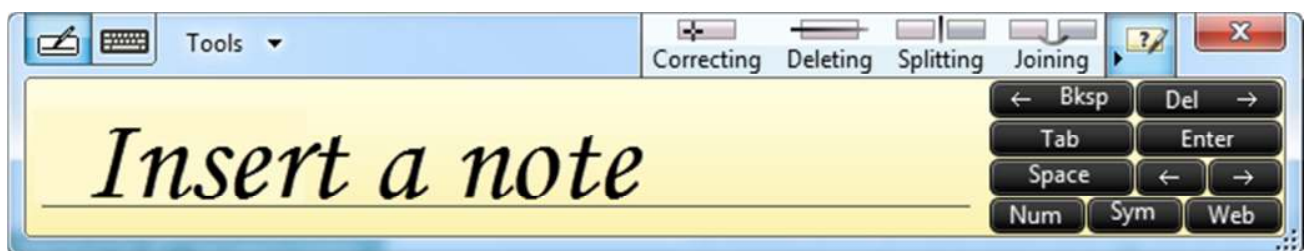
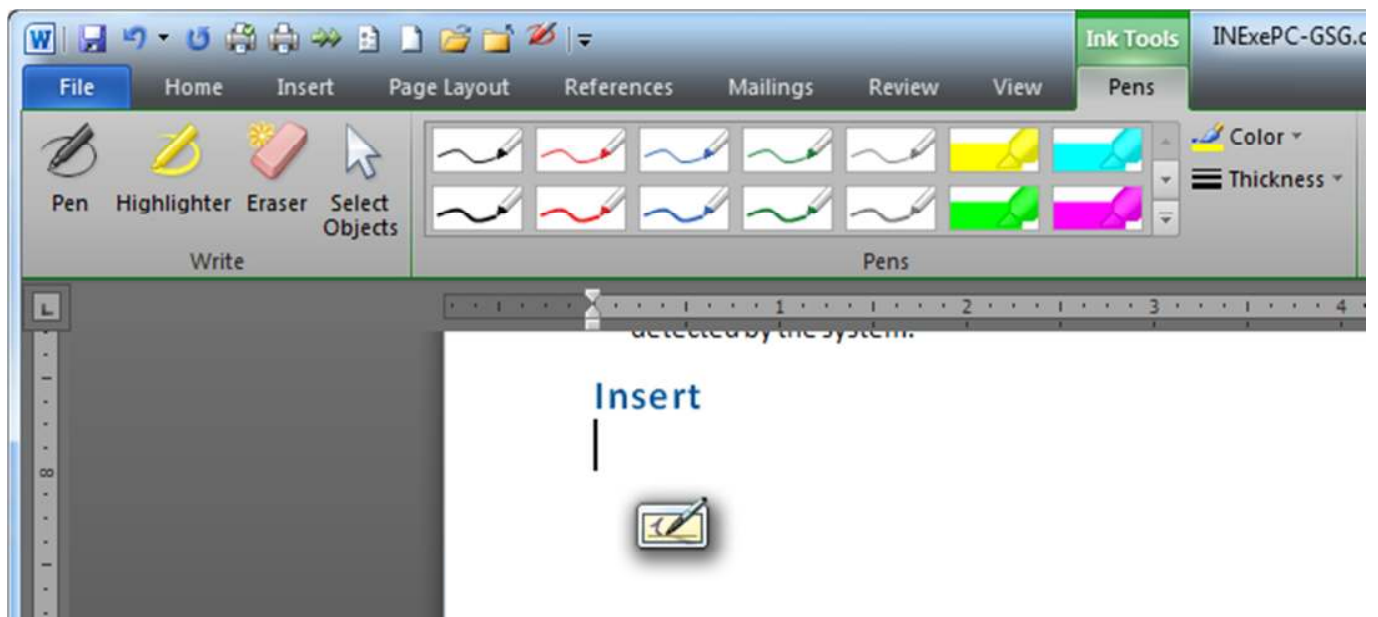


There are two methods of adding content to the document. After clicking the Start Inking button above you will get this toolbar where you can choose your annotation options. Using these tool will enter the item as a drawing element.

You can also start the Tablet PC Input Panel by going to Start and type:

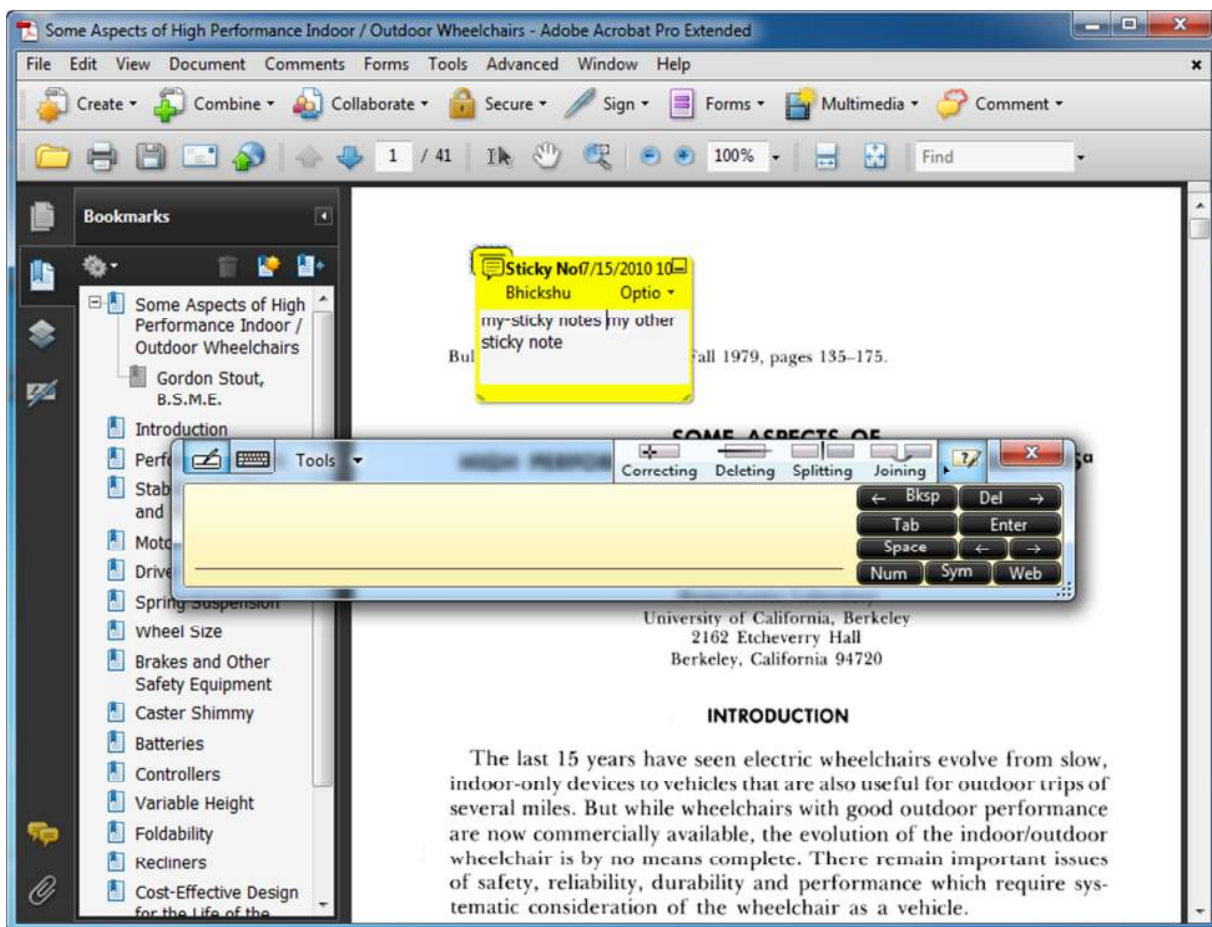


This will bring up the window below where you can position the cursor, using the pen, and insert the handwritten information that will be converted to text. Press the insert button to enter it at the cursor in Word.



The same approach can be used with pdf files as long as you are using a program such as Adobe Acrobat Pro or Standard that is capable of marking up the pdf document.

Here the sticky note tool is used to insert the text.





Other Information

Replacement batteries:

SR41W

SR41W

D392

LR41

GP392

Pen Refill:

M21 Mini pen refills 2 5/8" in length

