

## Datasheet

# IRIS Powerscan 9<sup>TM</sup>

for Microsoft® SharePoint®

- The most productive scanning, indexing and OCR solution, now with direct connection to your Microsoft® SharePoint® Server.
- Very intuitive interface, new with easy-to-use Wizard!
- Completely integrated workflow: scanning, indexing, quality control and validation, processing.
- The easiest way to index all your documents.
- Creation of hyper-compressed color PDF, PDF/A-1b and XPS output files.
- No scanning volume limitation.



## What's new ?

- ✎ Included Microsoft® SharePoint® connector for direct export of both your documents and their indexes
- ✎ No configuration needed: The user no longer needs to spend time manually defining document types and indices. Therefore™ categories and fields are dynamically and automatically imported into IRIS Powerscan™, thus saving valuable time for the user and ensuring greater accuracy.
- ✎ Pre-configured Quick Projects and Solution Packages – start working in no time!
- ✎ Easy-to-use, brand-new **Wizard** to define the process:
  1. Document separation
  2. Formatting and OCR options
  3. Etc.
- ✎ IRIS Powerscan™ for SharePoint® is available as an “all-in-one” package which was specifically designed for Small and Medium Business needs, with
  - a **35 page-per-minute** IRIS Powerscan™ license
  - a 100 000 page-per-year **iHQC™ hyper compression** license
  - the new **SharePoint® connector**
- ✎ The aforementioned connector is of course available separately, as an add-on. This means that the brand-new features described in this datasheet can also be enjoyed by users who already have IRIS Powerscan™.

## IRIS Powerscan™ Global Benefits

- ✎ Do you need to increase your scanning productivity?
- ✎ Do you need to convert scanned images into indexed and searchable PDF or XPS files, or editable text? (e.g. Microsoft® Word)
- ✎ Are you looking for a professional scanning, indexing and OCR application with NO VOLUME LIMITATION and that can meet your budget requirements?
- ✎ Do you need a user-friendly application with predefined projects so that you can start scanning immediately at a production level?

If you answered yes to one of these questions, IRIS Powerscan™ is definitely the application you need.

IRIS Powerscan™ is a powerful, user-friendly production application with a multi-stream architecture for the scanning and the electronic capture of any kind of documents. Furthermore, thanks to the embedded IRIS Document™ for IRIS Powerscan™, it is a complete professional solution to scan, structure, sort, index and convert all documents into fully searchable text files.

IRIS Powerscan™ is the perfect scanning client for all Canon® scanners\*: DR, Scanfront and iR.

With its extensive set of features, IRIS Powerscan™ is the perfect solution to kick-start your Microsoft® SharePoint® platform, or any Document Management System or ERP.

\* IRIS Powerscan™ also supports most popular scanners such as Kodak®, Fujitsu® and many more.

## High Value Proposition

- ✎ **Support of all Canon® scanners (DR, Scanfront and iR) or any other brands of scanners:** Kodak®, HP®, Avision®, Fujitsu®, Epson®, Bell + Howell® and many more thanks to generic TWAIN driver. Kofax® VRS™ (VirtualReScan™) is also completely supported (4.2 and later versions). Extended compatibility to ISIS scanners (Add-on).
- ✎ **High-speed scanning and multi-image display** of the scanned images for fast and easy control.
- ✎ **Ready-to-use application:** scan at a production level thanks to the predefined projects.
- ✎ **Improve the quality of images** with automatic **deskew**, **despeckle** and **page orientation detection**.
- ✎ Ensure the **identification of various document types**.
- ✎ **Advanced documents separation features** through barcodes, patch codes, OCR/ICR, blank pages, page count or layout identification thanks to the IRISFingerprint™ technology that allows you to work without separators (Add-on).
- ✎ **Advanced automatic sorting** through barcodes, patch codes, OCR/ICR and layout identification.
- ✎ **Advanced indexing** through barcodes, patch codes and OCR/ICR.
- ✎ **Creation of complete index files** containing all relevant data and metadata, in **XML** or **TXT** format.
- ✎ **More than 130 OCR languages supported** including Greek and Russian alphabets (see full list on page 7) Japanese, Chinese, Korean, Hebrew and Arabic are also available (Add-ons).
- ✎ **Easy workflow set-up.**
- ✎ **API (Application Programming Interface)** for integrated indexing, processing, event handling and export in most common programming languages such as **C++**, **.Net** or **Visual Basic®**.

## Powerful Post-Scanning OCR Engine

IRIS Powerscan™ offers numerous output capabilities (covered later in this datasheet) among which a full version of IRIS Document™, I.R.I.S.' high volume document conversion and compression application, thanks to which you will benefit from:

- ✎ **Recognition engine and full page OCR**  
IRIS Powerscan™ and IRIS Document™ use I.R.I.S.' latest recognition engine and formatting technology. Page analysis is carried out on the color image, resulting in better zone segmentation. This new engine also recognizes the color of the text and keeps it in the output file.
- ✎ **More than 130 languages supported, with multilingual recognition**  
IRIS Document™ recognizes more than 130 languages, and up to 5 languages on the same document, even with mixed alphabets (see page 7).
- ✎ **High-speed conversion of document images** into fully searchable PDF, PDF/A-1b, PDF with iHQC™ hyper-compression, and many others (see page 7).
- ✎ **iHQC™ technology (patent pending):** with this unique proprietary technology, get color PDF, PDF/A-1b and XPS searchable files even smaller than black & white images (with Add-on; more details on page 8).
- ✎ **Partial recognition of a batch of documents**  
Choose the pages of a document to be OCR'd and keep the rest of the document as an image file. This will speed up the process and reduce the amount of data stored.

### IRIS Powerscan™ for Microsoft® SharePoint® – Get Started In a Few Clicks!

Scanning has never been so easy. This special version of IRIS Powerscan™ makes things even easier thanks to a **brand-new Wizard**.

This Wizard is here to help you configure your IRIS Powerscan™ projects so you can start sending documents to Microsoft® SharePoint® in a few clicks only.

Just pick your favorite Quick Project or Solution Package, and the Wizard will guide you through 4 very easy steps (only the first one is compulsory; the others are optional).

1. Connection to your Microsoft® SharePoint® server.
  - 1.1 Enter your Microsoft® SharePoint® server address
  - 1.2 Choose a document library you wish your documents to be sent to (the list of available document libraries is populated automatically)
  - 1.3 Choose a document type.

You can also choose a folder. Note that this choice is not binding; you have the system ask you about the destination folder upon document export simply by activating the « Prompt before each process » option.
2. (optional) Choose index fields in IRIS Powerscan™ according to the ones you have in Microsoft® SharePoint®. Those fields are automatically detected by the Wizard in the Microsoft® SharePoint® document library you specified at step 1. The Wizard will also make sure those index fields match the type of the corresponding field in Microsoft® SharePoint® (date, time, number, currency, decimals...)
3. (optional) Choose your document formats. By default this feature is set to PDF, but this step lets you pick from the extensive list of output formats you will find on page 7.
4. (optional) Choose the type of separators IRIS Powerscan™ will use to perform automatic document sorting:
  - Blank page detection
  - Barcode (the barcode value can be associated to an index field)
  - Patch code
  - Number of pages

The Wizard gets you up and running in no time, but of course there are many other options still available through the usual menus inside of IRIS Powerscan™.

Also, you may want to create your own projects using the Wizard: just create your project based on a Quick Project or a Solution Package, and the Wizard will assist you. It won't open the next time you open your project, so as to give you the freedom to modify your settings directly inside the program.

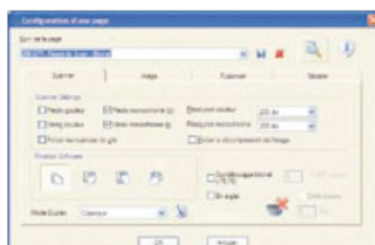
Once done with the Wizard, all you need to do is follow the usual IRIS Powerscan™ workflow, as described in the following pages.

## IRIS Powerscan™ - Workflow

### 1. Document Capture and Pre-processing

#### 📌 Predefined project

To speed up your workflow, IRIS Powerscan™ is delivered with numerous predefined projects. They include typical settings for common sorting, indexing and processing tasks. With IRIS Powerscan™, start scanning in just a few clicks!



Scanning page set-up

#### 📌 Import file

IRIS Powerscan™ can process any kind of image already scanned and archived in your system. Simply import a batch of scanned documents and process them according to your needs. Supported formats: BMP, TIFF, JPEG, PNG.

#### 📌 Multi-stream support

IRIS Powerscan™ is able to scan and handle multi-stream images, e.g. a batch of documents, front and rear, scanned in color as well as in grayscale and black & white at the same time.

#### 📌 Multi-mode scanning

Append, rescan, attach and insert pages within your batch.

#### 📌 Automatic pre-processing of the scanned images

Features such as automatic on-the-fly deskew, cropping/overcropping (eliminates black borders), rotation (supports landscape scanning) and blank page detection and deletion (reduces need to pre-sort) let you scan documents without worries.

#### 📌 Image adjustment

Adjust images of a complete batch of documents without having to scan them again. Available features are digital rethresholding, rebinarization, rescanning, etc.

#### 📌 Image manipulation

- Merge front and rear of documents into a single image. Split front and rear of very long documents into smaller images (e.g. each side of an A3 document into two A4 documents).
- Deskew: the skewing of the text is analyzed on the front of the page but is applied both on the front and the back of the documents, resulting in a much faster processing speed.
- Despeckle: clean up images by removing noise that can appear when scanning documents.
- Smoothing of color images: allow optimal recognition results by reducing sharp transitions in your documents with the "smooth color image" function.
- Page orientation detection: automatic rotation and straightening of the text orientation contained in your documents for optimal OCR accuracy.
- Binarization: extremely fast binarization of color images. Scan all documents in color and create binarized images that can be improved with contrast, brightness, smoothing and despeckle features.
- Color dropout: when converting color images to black and white, remove problematic colors.
- Image cropping and zone deletion: remove edges of images, keep only selected parts, blank out unwanted zones, etc.

## 2. Sorting

---

### ✎ Automatic identification of the document type

Automatic batch and document sorting from barcodes, patch codes, OCR/ICR zones and layout identification.

With layout identification, train the program about the various document types you are scanning, so that any incoming document with a similar template is identified and sorted automatically (IRISFingerprint™ Add-on – see page 11).

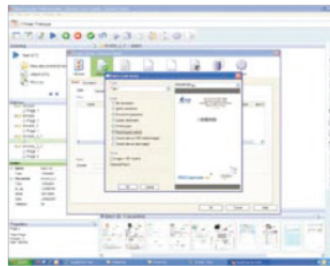
Alternatively use barcode values or OCR/ICR zones to identify documents.

### ✎ On-line separation of documents

Automatic batch and document separation thanks to barcodes, patch codes, OCR/ICR zones, blank pages, page count and layout identification.



Barcode set-up



Patch code set-up

## 3. Indexing

---

### ✎ On-line indexing at batch or document level

While scanning, index files automatically at batch or document level thanks to OCR/ICR zones, barcodes, MICR codes and patch codes.

### ✎ Indexing options

You can set special default values, split barcode values over several fields, or validate indexes through mask formulas (invalid values will be highlighted in red).

### ✎ Data Link

Any indexing value can be retrieved and/or validated through an ODBC data source.

### ✎ Specific indexing settings for each document type

With this particular feature, documents can be indexed and processed differently according to their type.

### ✎ Powerful barcode recognition

Front and rear barcode recognition: IRIS Powerscan™ recognizes more than 18 types of barcodes including the PDF 417 high density, the Data matrix and the QR two-dimensional barcodes.

### ✎ Banking Fonts OCR

Enjoy powerful banking font recognition: OCR-A1 Alphanumeric, OCR-A1 Eurobanking, OCR-A1 Numeric, OCR-B1 Alphanumeric, OCR-B1 Eurobanking, OCR-B1 Numeric, E-13B Optical and CMC7.

### ✎ Document renaming

Several options are available for naming the output files, including any indexed information along with available metadata such as scan date, scan station name, incremental number, etc.

### ✎ Document numbering

Continuous incrementing of document numbers across batches and incrementing of image numbers across documents.

## 4. Quality Control & Validation

---

### ✎ Improved indexing

Indexing has been made very fast and easy: you no longer need to key in the data thanks to the drag-and-drop OCR feature, combo lists and last value indexing.

### ✎ Multi-image display

With IRIS Powerscan™ you can quickly and easily verify scanned documents by displaying from 1 to 81 images at a time. Enjoy other valuable features such as multi-criteria filtering, dynamic zooming, dynamic filter and a slider to navigate through a batch of documents.

 **Tree view**

Navigate easily among batches, documents and pages thanks to the tree view. It also allows you to cut, copy, paste and drag-and-drop any object (batch, document, page).

 **Editing tools**

The user-friendly interface of IRIS Powerscan™ lets you easily rescan, rotate, reorder and delete pages.

 **Booklet reordering**

By essence, certain documents cannot be scanned in the right page order (stapled documents, folders, brochures, booklets...). IRIS Powerscan™ features a handy booklet feature that will reorder everything automatically.

 **Post-scanning features**

Easily split and merge documents or batches and modify the position of pages across documents or documents across batches with a simple drag-and-drop.

 **Drag-and-drop OCR, ICR, barcode**

Data can be captured from any image using the drag-and-drop OCR tool. Simply select the text on the image and the information will be automatically captured.

 **Data Link**

All value indexing fields can be retrieved from an ODBC data source so you can very easily pick up the right indexing value through, for example, combo box.

 **Application Programming Interface**

IRIS Powerscan™ is an open application that lets you choose between numerous APIs: Connector API, Extended connector export API, Indexing API, Event Handler API, etc.

The Indexing API is used to define new formats for indexing fields and new validation/evaluation rules.


The Event Handler API can be used by an external application to interact with the general workflow of IRIS Powerscan™ by capturing events and acting on them.

**5. OCR, Document Creation & Compression**

---

 **Recognized languages**

American English, British English, Afrikaans, Albanian, Aymara, Balinese, Basque, Bemba, Bikol, Bislama, Brazilian, Breton, Bulgarian, Byelorussian, Catalan, Cebuano, Chamorro, Corsican, Croatian, Czech, Danish, Dutch, Esperanto, Estonian, Faroese, Fijian, Finnish, French, Frisian, Friulian, Galician, Ganda, German, Greek, Greenlandic, Haitian (Creole), Hani, Hiligaynon, Hungarian, Icelandic, Ido, Ilocano, Indonesian, Interlingua, Irish (Gaelic), Italian, Javanese, Kapampangan, Kicongo, Kinyarwanda, Kurdish, Latin, Latvian, Lithuanian, Luxembourgish, Macedonian, Madurese, Malagasy, Malay, Maltese, Manx (Gaelic), Maori, Mayan, Minangkabau, Nahuatl, Norwegian, Numeric, Nyanja, Nynorsk, Occitan, Pidgin English, Polish, Portuguese, Quechua, Rhaeto-Roman, Romanian, Rundi, Russian, Samoan, Sardinian, Scottish (Gaelic), Serbian, Serbian (Latin), Shona, Slovak, Slovenian, Somali, Sotho, Spanish, Sudanese, Swahili, Swedish, Tagalog, Tahitian, Tok Pisin, Tonga, Tswana, Turkish, Ukrainian, Waray, Wolof, Xhosa, Zapotec, Zulu, Bulgarian - English, Byelorussian - English, Greek - English, Macedonian - English, Russian - English, Serbian - English, Ukrainian - English, Hebrew - Simplified Chinese (optional), Traditional Chinese (optional), Japanese (optional), Korean (optional), Arabic and Farsi (optional) + Moldovan, Bosnian (Cyrillic and Latin), Tetum, Swiss-German and Kazak.

 **Output formats (via the embedded IRISDocument™)**

*If you chose to work out of the Quick Projects or Solution Packages custom-made for Microsoft® SharePoint®, a Wizard helps you get started (see page 4). The full list of output format below is available during the 3rd step of that Wizard. Should you choose to disregard that step, IRIS Powerscan™ generate PDF files as default.*

- **PDF** (4 different file modes: Image, Image-Text, Text, Text-Image, with many options: PDF/A-1b compliance for long-term archiving, certification, encryption).
- **PDF with iHQC™ hyper-compression** (3 different compression levels, many options: PDF/A-1b compliance, certification, encryption).
- **XPS** (4 different file modes: Image, Image-Text, Text, Text-Image).
- **XPS with iHQC™ hyper-compression** (3 different compression levels, many options).
- **Common file formats** such as TXT, RTF, DOC, OpenDocument text, HTML, XML, WordML, SpreadsheetML. Many reformatting parameters are available to respond to the most common needs, e.g. Word and RTF output files: "retain color of text", "retain color of background", "keep paper size", etc.
- **Image file formats** such as TIFF (single or multi-page), BMP, JPEG, JPEG2000 or PDF image (with possible iHQC™ hyper-compression).

Standard image compression: modify JPEG compression rate and image resolution when generating PDF files (with or without text files) and highly compress all your images with JPEG2000 technology.

*Note: IRIS Powerscan™ supports multiple output formats and connectors simultaneously: generate several output files with different file formats in one single process, from one image file, and export to any application.*

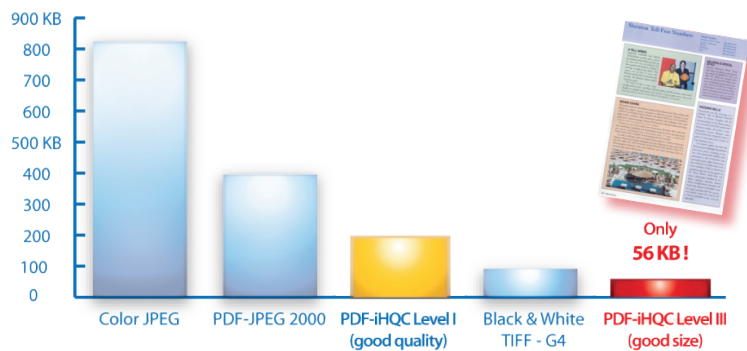
**iHQC™: Intelligent High Quality Compression Technology**

iHQC™ is the revolutionary hyper-compression technology from I.R.I.S., which will dramatically reduce the size of your PDF, PDF/A-1b and XPS files (color or black and white) while maintaining perfect image quality and text legibility. iHQC™ generates better quality than JPEG 2000 with much smaller files.

iHQC™ offers several levels of compression. IRIS Powerscan™, via the embedded IRIS Document™, comes standard with the basic one, for unlimited volumes of documents.

Images	Color (Uncompressed)	Color compressed JPEG		Black & White TIFF Group 4		PDF+ iHQC™ Good Size (image + text)		PDF+ iHQC™ Good Quality (image + text)	
	Kbytes	Kb	compression	Kb	compression	Kb	compression	Kb	compression
byte_a	19.978	1.445	14	119	168	57	350	86	232
sojoumc_son	19.158	824	23	91	211	59	325	88	218
eos03noise	33.836	1.024	33	89	380	58	583	100	338
fnac01	7.795	474	16	30	260	25	312	35	223
lion_a	8.196	759	11	35	234	30	273	44	186
park_a	4.303	436	10	30	143	25	172	32	134
scenic_b	13.540	619	22	76	178	43	315	61	222
time_france	19.429	904	21	106	183	57	341	80	243
invoiceTDI	26.092	1.259	21	29	900	52	502	85	307
<b>Total</b>	<b>126.236</b>	<b>7.744</b>	<b>16</b>	<b>605</b>	<b>209</b>	<b>406</b>	<b>311</b>	<b>611</b>	<b>207</b>

Example: this table is showing that iHQC™ allows to generate fully-searchable PDF, PDF/A-1b and XPS files (containing both the color image and the full-text index) that are more than 200 times smaller than the original color image and smaller than the black & white TIFF Group 4 image (which doesn't contain the full-text index).

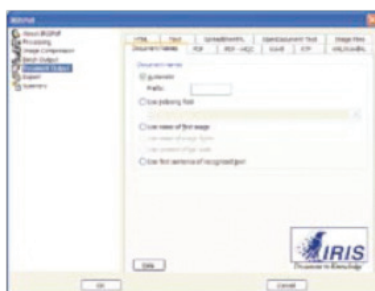


**Available iHQC™ compression levels:**

- iHQC™ - Level I – Good Quality - INCLUDED
- iHQC™ - Level I – Good Size
- iHQC™ - Level II – Good Quality
- iHQC™ - Level II – Good Size
- iHQC™ - Level III – Good Quality
- iHQC™ - Level III – Good Size

NOT INCLUDED - Optional iHQC™ Add-on.

## 6. Export Connectors



IRISDocument™ Output formats set-up

### ✎ Included

- Direct connection to Microsoft® SharePoint®- export your scanned documents along with their indexes (which perfectly match your Microsoft® SharePoint® index fields) directly into the right Microsoft® SharePoint® document library and folder.
- to I.R.I.S. products
  - IRISDocument™ Server
 

Add IRISDocument™ Server to IRIS Powerscan™ and enjoy server functionalities to keep scanning on your workstation while the OCR process is decentralized and done on a dedicated server. This combination allows you to make full usage of all the stations dedicated to the dematerialization process.
  - IRISCapture™ and X4D connectors
    - IRISCapture™ is a very powerful application for the data extraction and sorting of all kinds of documents. The software suite is specifically designed for the scanning, separation, recognition, and approval of invoices, forms, cheques, mail, résumés, ...
    - Docutec Xtract for Documents (X4D) is a solution designed to sort large volumes of highly complex documents into separate categories, assign them to the various business processes, perform automatic extraction of the relevant data for the respective business process, and transmit the collected data for further processing into the Electronic Data Processing system.
- to other products
 

A large number of Connectors is available for integration with other popular content, document and imaging applications, for example Therefore™. (list permanently updated).

### ✎ Available

- from third party companies
- from I.R.I.S.

### ✎ Custom

- SDK available (C++, .NET)
- Creation Support

## IRIS Powerscan™ - General Information

### 👉 The most intuitive and easy-to-use GUI

IRIS Powerscan™ benefits from a new and very intuitive interface that has been redesigned to give users valuable enhancements such as customizable workspaces and toolbars, an integrated explorer, scanning, indexing and property panes with a dynamic selection of objects (viewers, sliders, etc.).

### 👉 Workspaces

Define workspaces by customizing your own interface (panes, toolbars, etc.) according to your specific needs and the user privileges you want to grant.

### 👉 New OCR accuracy report

OCR accuracy report provides a graphical view of the OCR accuracy results on your documents. With this new tool you can compare the quality of the OCR process done with different settings to define the parameters you need to get the best OCR results on your documents.

### 👉 Index file in XML

Full text, character positions, confidence level as well as other information about the conversion process are all contained in an XML output, ready for a quick integration in a document management system.

### 👉 Custom installation

You can easily customize the installation by putting in your set of pre-configured projects, your Export Connectors, Event Handlers, etc.

For example, make one CD with everything pre-configured, and use it to make the installation on all your machines, thus eliminating the need to reconfigure all the PCs!

### 👉 Multi-user centralized configuration management (Add-on)

Export configurations, projects, images... Both the IRIS Powerscan™ settings and data can be saved in a central network location. A manual or automatic push/pull system ensures synchronization (project setup, security and scanner settings).

### 👉 Security - Users and roles:

- IRIS Powerscan™ is a multi-user application and therefore has the notion of Users and Roles. Those are managed within IRIS Powerscan™ through user groups, each with specific roles.
- LDAP user authentication through Active Directory®:  
IRIS Powerscan™ also offers the possibility of storing and accessing the user and role information on your Active Directory®. This makes for much easier centralized and integrated security management.  
Two solutions are available:
  - Automatic login, which uses the Windows® User Credentials
  - Semi-automatic login, where the Windows® User Credentials are prefilled in the login window

### 👉 Background processing

IRIS Powerscan™ offers a fully asynchronous process: you will no longer have to wait for your connector to be done before scanning the next batch.

## Add-on Modules

### iHQC™ Add-on

This add-on will give you access to the best levels of compression available in IRISDocument™ (see page 8 for more details):

- iHQC™ - Level I – Good Size
- iHQC™ - Level II – Good Quality
- iHQC™ - Level II – Good Size
- iHQC™ - Level III – Good Quality
- iHQC™ - Level III – Good Size

### Therefore™ Add-on

Export your scanned documents along with their indexes (which perfectly match your Therefore™ index fields) directly into the right Therefore™ category.

### IRISFingerprint™ Add-on

IRISFingerPrint™ is a document identification technology based on the layout of the document, meaning you don't need separators anymore. IRISFingerprint™ is easy to set up and extremely fast, since no OCR and no reading of barcode or patch code is performed.

### Arabic OCR Add-on

This add-on is totally unique and enriches IRIS Powerscan™ with the recognition of Arabic and Farsi.

### Asian OCR Add-on

Enriches IRIS Powerscan™ with 4 additional Asian recognition languages: Japanese, Traditional Chinese, Simplified Chinese and Korean.

### Hebrew OCR Add-on

Enriches IRIS Powerscan™ with Hebrew recognition.

### Multi-user centralized configuration management Add-on





Export configurations, projects, images... Both the IRIS Powerscan™ settings and data can be saved in a central network location. A manual or automatic push/pull system ensures synchronization (project setup, security and scanner settings).

### Microsoft® SharePoint® Add-on

IRIS Powerscan™ for SharePoint® is available as an "all-in-one" package which was specifically designed for Small and Medium Business needs, featuring a 35 page-per-minute IRIS Powerscan™ license, a 100 000 page-per-year iHQC™ hyper compression license and of course the new SharePoint® connector.

This new SharePoint® connector is also available separately as an add-on, meaning that its brand-new features can also be enjoyed by users who already have IRIS Powerscan™.

## System requirements

-  Intel® Pentium® or equivalent. Intel® Pentium® IV 2GHz or equivalent is recommended
-  512 MB RAM. 1 GB RAM is recommended
-  400 MB free disk space for the software, plus the space necessary for the image files
-  Operating system: Windows® 7, Vista®, XP, 2000, Server® 2008 and 2003

## I.R.I.S. Company Profile

Image Recognition Integrated Systems (I.R.I.S.), a Belgian company founded in 1987 and listed on Euronext Brussels (IRI), is a leader in the "Document to Knowledge" market, and provides extremely high-quality solutions for converting paper documents into electronic formats for archiving, storing and sharing digital information.

For more information on our company, our solutions or our products, visit the I.R.I.S. website at [www.irislink.com](http://www.irislink.com).

What's new ?	2
IRIS Powerscan™ Global Benefits	2
High Value Proposition	3
Powerful Post-Scanning OCR Engine	3
IRIS Powerscan™ for Microsoft® SharePoint® – Get Started In a Few Clicks!	4
IRIS Powerscan™ - Workflow	5
IRIS Powerscan™ - General Information	10
Add-on Modules	11
System requirements	11
I.R.I.S. Company Profile	11

**I.R.I.S. s.a.:** Rue du Bosquet 10  
1348 Louvain-la-Neuve  
Belgium  
Phone: +32-(0)10-45 13 64  
Fax: +32-(0)10-45 34 43  
info@irislink.com  
www.irislink.com

**I.R.I.S. Inc.:** Delray Office Plaza  
4731 West Atlantic Avenue  
Suite B1 et B2  
Delray Beach, Florida 33445  
U.S.A.  
Phone: +1-(561)-921 0847  
Fax: +1-(561)-921 0854  
info@irisusa.com  
www.irisusa.com